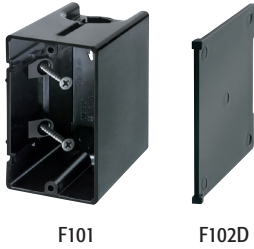


ONE-BOX™ Non-Metallic Outlet Boxes

For new or retrofit construction.

FEATURES AND BENEFITS

- For a variety of wall thicknesses—the ONE-BOX is removable, adjustable, and remountable even after the wall is in place
- Fast and easy to install
- Mounts directly to a wood or steel stud for a super secure installation
- Angled screws inside the ONE-BOX affix it firmly to the stud
- For both power and low voltage applications with the F102D voltage divider installed
- NM cable connector supplied
- 2-hour fire rating



F101

F102D



F102



F103



F104

*Mounts
DIRECTLY
to wood or
steel stud*

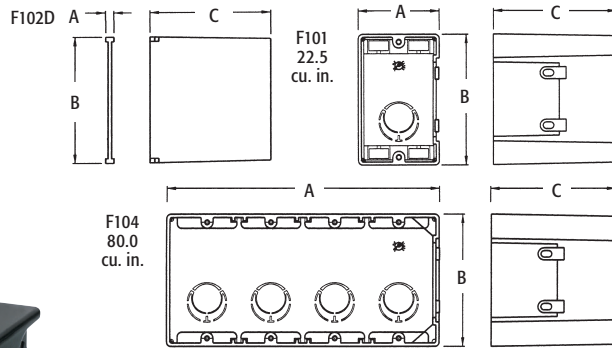


F101H

CATALOG NUMBER	UPC/DCI/NAED MFG #018997	DESCRIPTION/ CU. IN.	UNIT PKG	STD PKG	DIM A	DIM B	DIM C
F101*	43626	Single Gang Vert. / 22.5	50	50	2.280	3.720	3.510
F101H*	43634	Single Gang Horiz. / 22.3	25	25	3.720	2.280	3.500
F102*	43640	2-Gang Vert. / 41.3	25	25	4.110	3.740	3.510
F102D	43544	Voltage Divider	25	25	.233	3.560	3.400
F103*	43641	3-Gang Vert. / 61.0	25	25	5.930	3.740	3.510
F104*	43642	4-Gang Vert. / 74.5	10	10	7.740	3.740	3.510

*Add suffix "GC" to Catalog # when ordering in Canada to include grounding clip, for example F101GC.

PATENTED.

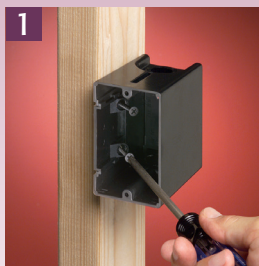


E170558 LR49636

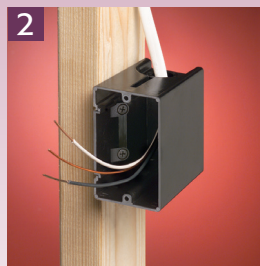


INSTALLATION INSTRUCTIONS

F101 New Construction

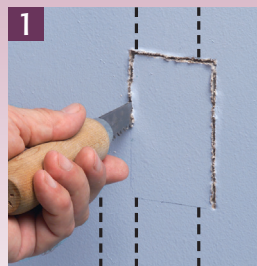


1 Attach ONE-BOX to wood or steel stud with captive installation screws. If the box is too far forward or back, simply back the screws out and reposition.

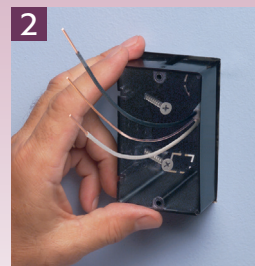


2 Pull wire through the knockout connector. (Ships with installed NM cable connector.)

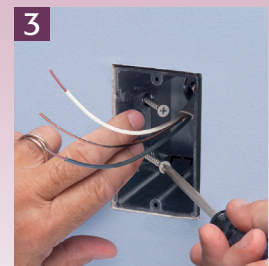
F101 Retrofit



1 For old work, position ONE-BOX adjacent to stud. Use box as the template to cut hole.



2 Pull wire. Insert ONE-BOX.



3 Mount ONE-BOX directly to stud with shipped-in place screws.