

TYPE EF



Markets:

- Cell Towers
- Construction
- Machine Tools (OEM)

This non-UL flexible liquidtight conduit is a competitive grade version of our type LT designed for a variety of installations requiring motion, vibration and bending. It offers good mechanical and moisture protection to enclosed conductors.

Construction:

Inner Core:

- Corrosion Resistant Plated Steel
- 3/8" – 2" Squarelock Profile

Liquidtight Jacket:

- Flexible PVC
- Resistant to Oils and Mild Acids

Application:

- Machine Tools
- Industrial Environments
- Wet and Oily Locations
- Outdoor use due to the inherent UV resistance of PVC
- Compatible with standard liquidtight connectors



Proudly made in the U.S.A.

Product Information

Certifications & Compliance

Manufactured to UL 360 Dimensions

CE BS EN IEC 61386 Classification Code 443140650314

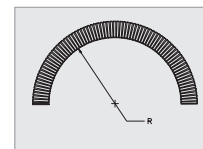
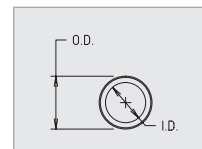
ARRA Certification

Standard Colors

Machine Tool Gray and Black.

Working Temperatures

-20°C to 80°C



US Trade Size	ISO (MM)	CSA (MM)	Type	INTERNAL DIAMETER		OUTER DIAMETER		INSIDE BEND RADIUS		WEIGHT Lbs. per 100 Ft.	STANDARD LENGTH					
				Min (IN.)	Max (IN.)	Min (IN.)	Max (IN.)	Static (IN.)	Dynamic (IN.)		Carton (Ft.)	Part #	Reel (Ft.)	Part #	Reel (Ft.)	Part #
3/8"	16	12	EF-10	0.484	0.504	0.690	0.710	1.5	4.0	20	100	80101	500	80103	1000	80104
1/2"	20	16	EF-11	0.622	0.642	0.820	0.840	2.0	5.0	24	100	80111	500	80113	1000	80114
3/4"	25	21	EF-12	0.820	0.840	1.030	1.050	2.5	6.0	31	100	80122	500	80124	1000	80127
1"	32	27	EF-13	1.041	1.066	1.290	1.315	3.0	12.0	43	100	80132	400	80137		
1 1/4"	40	35	EF-14	1.380	1.410	1.630	1.660	3.5	15.0	60	50	80142	200	80147		
1 1/2"	50	41	EF-15	1.575	1.600	1.865	1.900	4.5	17.0	78	50	80152	150	80154		
2"	63	53	EF-16	2.020	2.045	2.340	2.375	5.5	22.0	104	50	80162	100	80164		



Jacketed Metallic

