

Rittal – The System.

Faster – better – everywhere.

Base Plates for CM, TP – CM 5001.219

Date : May 27, 2017

ENCLOSURES

POWER DISTRIBUTION

CLIMATE CONTROL

IT INFRASTRUCTURE

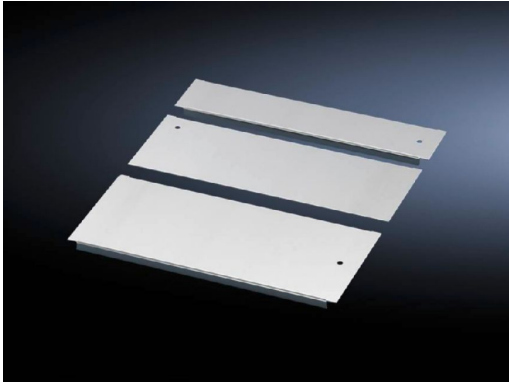
SOFTWARE & SERVICES

FRIEDHELM LOH GROUP



Base Plates for CM, TP – CM 5001.219

created: 27.05.2017 build on www.rittal.com/us-en



Product description

Description: Equipotential bonding is provided via assembly components and grounding points.

Material: Carbon steel

Surface finish: Zinc-plated

Supply includes: Assembly components

Note: For greater stability and universal cable entry, the base opening is divided in the width for 1000, 1200 and 1600 mm wide enclosures, and is suitable for various configurations. Several base plate modules need to be combined to close off the base completely in the TS-IT

Product features

Suitable for: Enclosure type: TS IT
Enclosure type: TS
Enclosure type: CM
Enclosure type: TP
Width: 800 mm (31 ")

Dimensions: Depth: 150 mm (5.9 ")

Packaging unit: 1 pc(s).

Weight/packaging unit: 1.58 kg (3.5 lb.)

EAN: 4028177523234

Customs tariff number:	73269098
ETIM 6.0:	EC002620
ETIM 5.0:	EC002620
eCl@ss 8.0/8.1:	27189261
eCl@ss 7.0/7.1:	27189261
eCl@ss 6.0/6.1:	27189261
eCl@ss 5.1/5.1.4:	27189240
Product description (long):	CM Gland plate, for CM, TP, D: 150 mm, for W: 800 mm

2017 © Rittal Corporation