

## Applications:

LCC cable tray conduit clamps are used for installation on cable tray side rails with inside flanges (requiring inside tray mounting) and outside flanges; LCCF clamps are for use exclusively on inside flanges.

### LCC/LCCF cable tray conduit clamps:

- Provide a means of clamping metal conduit (rigid steel or aluminum, IMC and EMT) to cable tray to provide for the exit of power and/or control cables from tray
- Provide a means to firmly bond exit conduit to cable tray for best grounding continuity
- Provide strong mechanical support for exit conduits and cables
- Can be used indoors or outdoors, wherever cable tray systems are installed
- Facilitate the safe exit of cables from tray – insure protection of cables from damage

## Features:

- Quick and easy installation – low installed cost. Merely tighten clamp nut and/or set screw(s)
- Swivel hook clears conduit. No disassembly required for installation
- No drilling or welding necessary for installation
- Provides superior ground continuity between conduit and cable tray
- Clamps conduit at any angle with relation to tray – facilitates wire pulling, minimizes conduit bending
- Malleable iron body provides great strength
- Knurled body has no-slip surface for conduit and tray – positive grip assured
- Compact design has low profile – minimum tray space required for assembly
- Design accommodates all popular types of cable tray
- Accommodates wide range of conduit sizes – 1/2" through 4"

### LCCF features:

- Outside mounting facilitates inside rail installation
- Adjustable hook assures positive grip on inside rail
- Accommodates 3/4" through 1 3/4" wide flange

## Certifications and Compliances:

- UL Standard: 467 (Grounding and Bonding Equipment)

## Standard Materials:

- Body – cast iron
- Hook – steel
- Set screws and clamping nut – steel
- Hook cap – vinyl

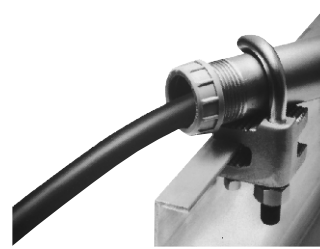
## Standard Finishes:

- Cast iron – electrogalvanized and aluminum acrylic paint
- Steel – zinc electroplate
- Vinyl – natural

## Conduit Size Ranges:

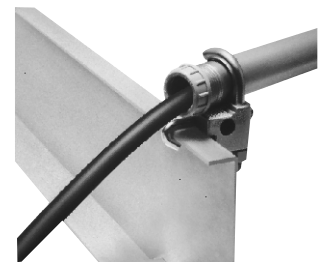
- 1/2" to 4"

## LCC



For use with outside rail tray

## LCCF



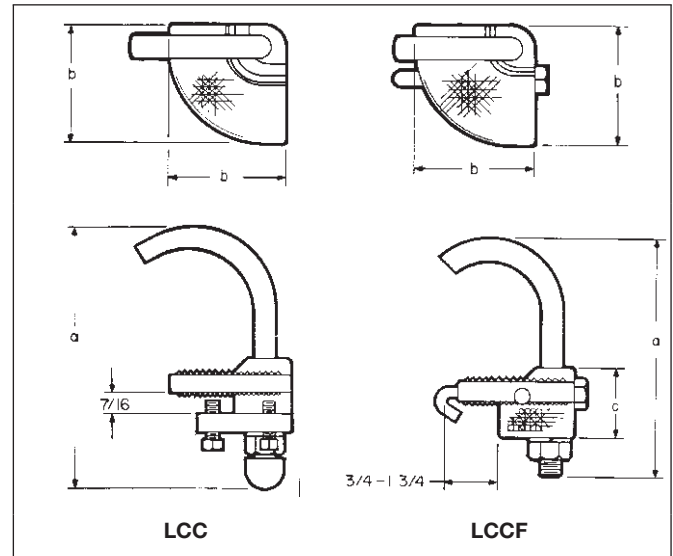
For use with inside rail tray

## Ordering Information

Conduit Size	Cat. #	Cat. #
1/2	LCC1	LCCF1
3/4	LCC2	LCCF2
1	LCC3	LCCF3
1 1/4	LCC4	LCCF4
1 1/2	LCC5	LCCF5
2	LCC6	LCCF6
2 1/2	LCC7	LCCF7
3	LCC8	LCCF8
3 1/2	LCC9	LCCF9
4	LCC010	LCCF010

## Dimensions

### In Inches:



Conduit Size	LCC		LCCF		
	a	b	a	b	c
1/2	3 <sup>9</sup> / <sub>16</sub>	1 <sup>11</sup> / <sub>16</sub>	3 <sup>1</sup> / <sub>8</sub>	1 <sup>5</sup> / <sub>8</sub>	1 <sup>11</sup> / <sub>32</sub>
3/4	3 <sup>7</sup> / <sub>16</sub>	1 <sup>11</sup> / <sub>16</sub>	3 <sup>11</sup> / <sub>32</sub>	1 <sup>5</sup> / <sub>8</sub>	1 <sup>11</sup> / <sub>32</sub>
1	3 <sup>9</sup> / <sub>16</sub>	1 <sup>11</sup> / <sub>16</sub>	3 <sup>19</sup> / <sub>32</sub>	1 <sup>5</sup> / <sub>8</sub>	1 <sup>11</sup> / <sub>32</sub>
1 1/4	4	1 <sup>11</sup> / <sub>16</sub>	3 <sup>15</sup> / <sub>16</sub>	1 <sup>5</sup> / <sub>8</sub>	1 <sup>11</sup> / <sub>32</sub>
1 1/2	4 <sup>13</sup> / <sub>16</sub>	2 <sup>1</sup> / <sub>16</sub>	4 <sup>3</sup> / <sub>4</sub>	2 <sup>3</sup> / <sub>4</sub>	1 <sup>11</sup> / <sub>16</sub>
2	5 <sup>9</sup> / <sub>16</sub>	2 <sup>1</sup> / <sub>16</sub>	5 <sup>1</sup> / <sub>4</sub>	2 <sup>3</sup> / <sub>4</sub>	1 <sup>11</sup> / <sub>16</sub>
2 1/2	5 <sup>13</sup> / <sub>16</sub>	2 <sup>1</sup> / <sub>16</sub>	5 <sup>3</sup> / <sub>4</sub>	2 <sup>3</sup> / <sub>4</sub>	1 <sup>11</sup> / <sub>16</sub>
3	6 <sup>13</sup> / <sub>16</sub>	3 <sup>3</sup> / <sub>4</sub>	6 <sup>3</sup> / <sub>4</sub>	3 <sup>1</sup> / <sub>16</sub>	2 <sup>3</sup> / <sub>16</sub>
3 1/2	7 <sup>9</sup> / <sub>16</sub>	3 <sup>3</sup> / <sub>4</sub>	7 <sup>1</sup> / <sub>4</sub>	3 <sup>1</sup> / <sub>16</sub>	2 <sup>3</sup> / <sub>16</sub>
4	7 <sup>13</sup> / <sub>16</sub>	3 <sup>3</sup> / <sub>4</sub>	7 <sup>3</sup> / <sub>4</sub>	3 <sup>1</sup> / <sub>16</sub>	2 <sup>3</sup> / <sub>16</sub>