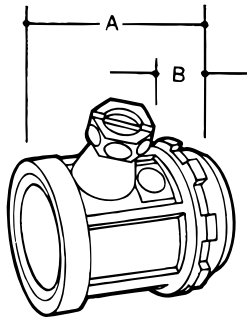
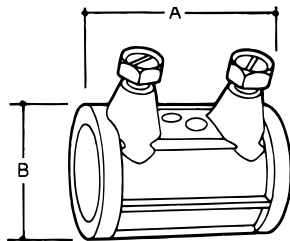


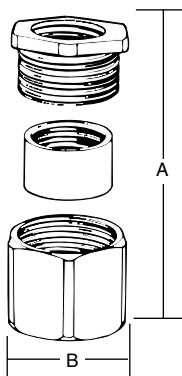
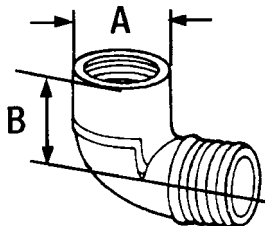
Rigid/Intermediate Grade Conduit Fittings



Rigid Connector



Rigid Coupling



- ½"-2½" – Steel
- 2½"-6" – Malleable Iron
- Zinc plated

Rigid Connectors – Set Screw Type – Die Cast Zinc

Cat. No.	Conduit Size	A	B	Std. Ctn.
HC-201	½"	1.34	0.39	250
HC-202	¾"	1.44	0.45	250
HC-203	1"	1.54	0.49	100
WITH INSULATED THROAT				
HC-801	½"	1.34	0.39	250
HC-802	¾"	1.44	0.45	250
HC-803	1"	1.54	0.49	100

Rigid Couplings – Set Screw Type – Die Cast Zinc

Cat. No.	Trade Size	A	B	Std. Ctn.
HK-201	½"	1.77	1.09	250
HK-202	¾"	2.06	1.34	250
HK-203	1"	2.29	1.61	100

90° Short Radius Elbows – Die Cast Zinc

Cat. No.	Size (in.)	Dimensions (in.)		Shf. Ctn./ Ship Qty.
		A	B	
HL-201-SC	½"	.98	.96	50/500
HL-202-SC	¾"	1.17	1.04	25/250

USE: To join rigid or IMC conduit at right angles where lack of room prevents using a standard sweep elbow, or to terminate a run of rigid or IMC conduit at a box.

UL Listing E37148

Three Piece Couplings

Cat. No.	Conduit Size	Dimensions (in.)		Shf. Ctn./ Ship Qty.
		A (Assembled)	B	
EK-401	½"	1 1/16"	1 1/8"	100
EK-402	¾"	1 1/8"	1 11/32"	50
EK-403	1"	1 3/8"	1 5/8"	25
EK-404	1 1/4"	1 21/32"	2 5/32"	25
EK-405	1 1/2"	1 7/8"	2 23/32"	25
EK-406	2"	2"	3 33/64"	20
EK-407	2 1/2"	2 1/2"	3 29/64"	10
EK-408	3"	3 3/8"	4 23/32"	6
EK-409	3 1/2"	3 3/8"	5 5/32"	5
EK-410	4"	3 29/32"	5 29/32"	5
EK-411	5"	4 7/16"	7"	1
EK-412	6"	4 9/16"	8 1/8"	1

U.L. File No. E-1275 ½" thru 4"

