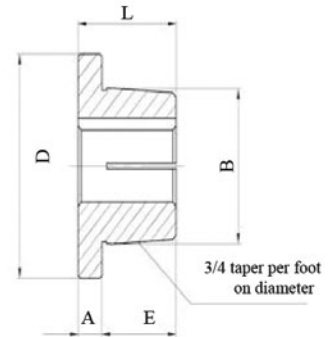
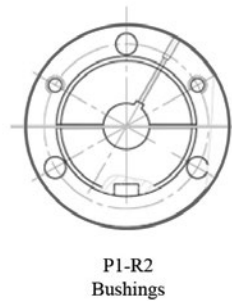
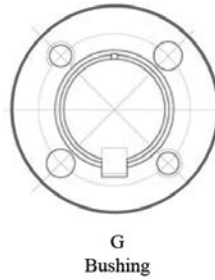


IDC SELECT® SHEAVES & BUSHINGS

BUSHINGS

DOUBLE SPLIT TAPER BUSHINGS



BUSHINGS

Bushing	Double Split Taper Bushings - Dimensions (in)					Bolt Circle Diameter	Cap Screws GRADE 5		Average Weight (lb)
	A	B	D	E	L		Qty	Size	
G	1/4	1.172	2	3/4	1	19/16	2	1/4 x 5/8	0.50
P1	13/32	1 15/16	3	1 17/32	1 15/16	27/16	3	5/16 x 1	1.30
P2	13/32	1 15/16	3	2 17/32	2 15/16	27/16	3	5/16 x 1	1.50
B	1/2	2 5/8	3 11/16	1 7/16	1 15/16	3 1/8	3	5/16 x 1 1/4	1.80
Q1	17/32	2 7/8	4 1/8	1 31/32	2 1/2	3 3/8	3	3/8 x 1 1/4	3.50
Q2	17/32	2 7/8	4 1/8	2 31/32	3 1/2	3 3/8	3	3/8 x 1 1/4	4.50
R1	5/8	4	5 3/8	2 1/4	2 7/8	4 5/8	3	3/8 x 1 3/4	7.50
R2	5/8	4	5 3/8	4 1/4	4 7/8	4 5/8	3	3/8 x 1 3/4	11.00

Bushing	Bore Range (in)	Wt.	Key Seat (in)
G	3/8, 7/16, 3/4	0.40	NONE
	1/2, 9/16	0.40	1/8 x 1/16
	1/2, 9/16	0.40	1/8 x 1/16
	5/8, 1 1/16, 3/4, 13/16, 7/8	0.40	3/16 x 3/32
	15/16*, 1*	0.40	1/4 x 1/16*
P1	1/2, 9/16	1.70	1/8 x 1/16
	5/8, 1 1/16, 3/4, 2 1/32, 25/32, 13/16, 7/8	1.70	3/16 x 3/32
	15/16, 3 1/32, 1, 1 1/16, 1 1/8, 13/16, 1 1/4, 1 3/8	1.70	5/16 x 5/32
	1 1/16, 1 3/4, 1 7/16	1.70	1 3/8 x 3/16
P2	3/4, 13/16, 7/8	2.18	3/16 x 3/32
	15/16, 1, 1 1/16, 1 1/8, 13/16, 1 1/4	2.18	1/4 x 1/8
	15/16, 1 3/8	2.18	5/16 x 5/32
	1 7/16*, 1 1/2, 1 9/16, 1 5/8, 1 11/16, 3/4	2.18	3/8 x 3/16
Q1	3/4, 13/16, 7/8	4.60	3/16 x 3/32
	15/16, 1, 1 1/16, 1 1/8, 13/16, 1 1/4	4.60	1/4 x 1/8
	15/16, 1 3/8	4.60	5/16 x 5/32
	1 7/16, 1 1/2, 1 9/16, 1 5/8, 1 11/16, 1 3/4	4.60	3/8 x 3/16
	1 13/16, 1 7/8, 1 15/16, 2, 2 1/16, 2 1/8, 2 3/16, 2 1/4	4.60	1/2 x 1/4
	2 5/16, 2 3/8, 2 7/8, 2 1/2, 2 9/16, 2 5/8, 2 11/16	4.60	5/8 x 5/16
		4.60	5/8 x 5/16

Bushing	Bore Range (in)	Wt.	Key Seat (in)
Q2	1, 1 1/16, 1 1/8, 1 3/16, 1 1/4	5.80	1/4 x 1/8
	15/16, 1	5.80	5/16 x 3/32
	1 3/8, 1 7/16, 1 1/2, 1 9/16, 1 5/8, 1 11/16, 1 3/4	5.80	3/8 x 3/16
	1 13/16, 1 7/8, 1 15/16, 2, 2 1/16, 2 1/8, 2 3/16, 2 1/4	5.80	1/2 x 1/4
	2 5/16, 2 3/8, 2 7/16, 2 1/2, 2 9/16, 2 5/8	5.80	5/8 x 5/16
R1	1 1/16	9.95	3/16 x 3/32
	1 1/8, 1 3/16, 1 1/4, 1 5/16, 1 3/8, 1 7/16	9.95	1/4 x 1/8
	1 1/2, 1 9/16, 1 5/8, 1 11/16, 1 3/4	9.95	3/8 x 3/16
	1 13/16, 1 7/8, 1 15/16, 2 1/16, 2 1/8, 2 3/16, 2 1/4	9.95	1/2 x 1/4
	2 5/16, 2 3/8, 2 7/16, 2 1/2, 2 9/16, 2 5/8, 2 11/16, 2 3/4	9.95	5/8 x 5/16
R2	2 13/16, 2 7/8, 2 15/16, 3, 3 1/8, 3 3/16, 3 1/4	9.95	3/4 x 3/8
	3 3/8, 3 7/16, 3 1/2, 3 5/8, 3 3/4	9.95	7/8 x 7/16
	1 1/16	14.38	3/16 x 3/32
	1 3/8, 1 7/16, 1 1/2, 1 9/16, 1 5/8, 1 11/16, 1 3/4	14.38	3/8 x 3/16
	1 13/16, 1 7/8, 1 15/16, 2 1/16, 2 1/8, 2 3/16, 2 1/4, 2 5/16	14.38	1/2 x 1/4
R2	2 3/8, 2 7/16, 2 1/2, 2 9/16, 2 5/8, 2 11/16, 2 3/4	14.38	5/8 x 5/16
	2 13/16, 2 7/8, 2 15/16, 3, 3 1/8, 3 3/16, 3 1/4	14.38	3/4 x 3/8
	3 3/8, 3 7/16, 3 1/2, 3 5/8, 3 3/4, 3 3/8	14.38	7/8 x 7/16
	3 1/16, 3 1/2, 3 5/8	14.38	7/8 x 7/16
		14.38	7/8 x 7/16

*Shallow keyseat - keystock supplied with bushing

A rectangular key is supplied with bushings that have shallow keyseats. This key will fit the standard depth keyseat on the shaft and the shallow keyseat on the bushing.

IDC SELECT® SHEAVES & BUSHINGS

BUSHINGS

DOUBLE SPLIT TAPER BUSHINGS

BUSHINGS

Bushing	Bore Range (mm)	Keyseat (mm)	Wt.
G	10, 11, 12	No Key	0.40
	14, 16	5 x 2.5	0.40
	18, 19, 20, 22	6 x 3	0.40
	24, 25	8 x 3.5	0.40
H	10, 11	No Key	0.90
	14, 15, 16	5 x 5	0.90
	18, 19, 20, 22	6 x 6	0.90
	24, 25, 28, 30	8 x 3.5	1.70
	32, 35, 38	10 x 4	0.90
P1	14, 15, 16	5 X 2.5	1.70
	18, 19, 20, 22	6 x 3	1.70
	24, 25, 28, 30	8 x 3.5	0.90
	32, 35, 36, 38, 39	10 x 4	1.70
	40, 42	12 x 4	1.70
B	15, 16	5 x 2.5	3.20
	18, 19, 20, 22	6 x 3	3.20
	24, 25, 28, 30	8 x 3.5	3.20
	32, 35, 36, 38,	10 x 4	3.20
	40, 42	12 x 4	3.20
	45, 48, 50	14 x 4.5	3.20
	55	16 x 5	3.20
	60	18 x 5.5	3.20
Q1	18, 19, 20, 22	6 x 3	4.60
	24, 25, 28, 30	8 x 3.5	4.60
	32, 35, 36, 38, 40, 42	10 x 4	4.60
	45, 48, 50	14 x 4.5	4.60
	55	16 x 5	4.60
	60, 65	18 x 5.5	4.60
R1	28, 30	8 x 3.5	9.95
	32, 35, 36, 38	10 x 4	9.95
	39, 40, 42	12 x 4	9.95
	45, 48, 50	14 x 4.5	9.95
	55	16 x 5	9.95
	60, 65	18 x 5.5	9.95
	70, 75	20 x 6	9.95
	80, 85	22 x 7	9.95
R2	35, 36, 38	10 x 4	14.38
	39, 40, 42	12 x 4	14.38
	45, 48, 50	14 x 4.5	14.38
	55	16 x 5	14.38
	60, 65	18 x 5.5	14.38
	70, 75	20 x 6	14.38
	80, 85	22 x 7	14.38
90	25 x 7	14.38	

DOUBLE SPLIT TAPER BUSHINGS INSTALLATION INSTRUCTIONS



INSTALLATION

1. Properly clean shaft, bore and taper surfaces of bushing. Remove and degrease any excess oil, paint or dirt, this includes the cap screws. Caution: excessive cap screw torque can cause sheave or bushing breakage. The use of lubricants can cause sheave breakage. **DO NOT USE LUBRICANTS OF ANY TYPE WITH THIS INSTALLATION.**
2. Install the bushing into the hub and match the unthreaded bushing holes with the threaded holes of the hub. Install the cap screws and lock washers through the unthreaded holes and into the threaded holes of the hub. Engage only a few threads by hand – do not use a wrench.
3. Install key into the keyway path of the shaft and fit assembly onto the shaft and locate in the proper location.
4. Tighten cap screws alternately and gradually. Tighten cap screws to the recommended wrench torque value using a torque wrench

REMOVAL

Remove cap screws and insert into the tapped holes in the bushing. Tighten them alternately and gradually until the bushing disengages from the hub.

Recommended Wrench Torque		
Bushing #	lb-in	lb-ft
G	95	8
H	95	8
P1	192	16
P2	192	16
Q1	348	29
Q2	348	29
R1	348	29
R2	348	29