

AJ and AJC back boxes with angle adapters for 60A, 100A, 200A and 400A receptacle housings; AJX assemblies for 200A and 400A receptacle housings



AJ back box with 60A/100A/150A angle adapter

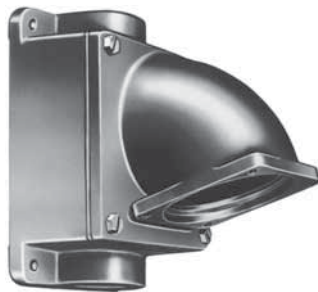


AJ back box with 200A/400A angle adapter

AJX assemblies (Back box with angle adapter, 3 blank plates and 1 hub plate)



Hub size	Cat. # 400A
2"	AJX69
2 1/2"	AJX79
3"	AJX89
3 1/2"	AJX929
4"	AJX9210
5"	AJX9212



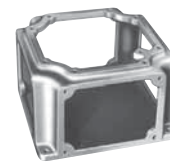
AJC back box with 60A/100A/150A AJA angle adapter



AJC back box with 200A angle adapter

AJX component parts

For use in making assemblies with arrangements of hub plates (4 required) other than those listed.



Back box



Angle adapter

Ordering information:

AJ and AJC back boxes

Hub size	Type	60A, 100A, 150A		200A		400A	
		Cat. # Box only	Cat. # Box and adapter assembly	Cat. # Box only	Cat. # Box and adapter assembly	Cat. # Box only	Cat. # Box and adapter assembly
1"	One hub	AJ46 ^B	AJ37				
	Through feed	AJC56 ^B	AJC37				
1 1/4"	One hub	AJ46	AJ47				
	Through feed	AJC56 ^B	AJC47				
1 1/2"	One hub	AJ56	AJ57	AJ71 ^B	AJ58		
	Through feed	AJC56 ^B	AJC57				
2"	One hub	AJ66	AJ67	AJ71 ^B	AJ68	AJ82 ^B	AJ69 ^C
	Through feed	AJC66	AJC67				
2 1/2"	One hub			AJ71 ^B	AJ78	AJ82 ^B	AJ79 ^C
	Through feed			AJC71	AJC78		
3"	One hub					AJ82 ^B	AJ89 ^C
	Through feed						
Angle adapter		AJA6		AJA1		AJA2	

Type	Cat. #
Back box 400A	AJX99
Angle adapter 400A	AJ245



Hub plate



Blank plate

Hub size	Cat. # Hub plate 400A	Cat. # Blank plate 400A
2"	YYP96	YYP900
2 1/2"	YYP97	
3"	YYP98	
3 1/2"	YYP99	
4"	YYP910	
5"	YYP9012	

Description	Cat. #
Hub plate replacement gasket (for all hub plates shown above)	GASK1041

^A AJ and AJC back boxes are square, making it possible to install with hub in several positions.

^B Reducer supplied with assembly.

^C Use AJ69, AJ79 or AJ89 for cables up to 2 - #350MCM, 3 - #300MCM or 4 - #250MCM. For larger cables, use AJX69, etc., listed under assemblies.