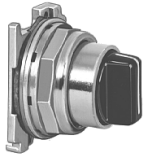


10250T Series, Selector Switch Components

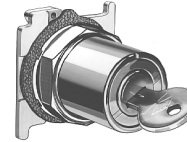
Selector Switch Operators



2-Position Maintained Black Knob Selector Switch — Cam 1
Cat. No. 10250T1311



3-Position Maintained Black Lever Selector Switch — Cam 3
Cat. No. 10250T3023



2-Position Maintained Horizontal Mount, Key Removal #1 Keyed Selector Switch — Cam 1
Cat. No. 10250T16111

Selector Switch Operators with Caps

Table 2-214. Selector Switch Operators with Caps — UL (NEMA) 3, 3R, 4, 4X, 12, 13

Positions	Operator Action ①	Black Knob Selector Switch — Vertical Mounting ③		Black Lever Selector Switch — Vertical Mounting ③	
		Cam Code ②	Catalogue Number	Cam Code ②	Catalogue Number
2-Position — 60° Throw		1	10250T1311	1	10250T3011
		1	10250T1371	1	10250T3071
3-Position — 60° Throw		2 3	10250T1322 10250T1323	2 3	10250T3022 10250T3023
		2 3	10250T1332 10250T1333	2 3	10250T3032 10250T3033
		2 3	10250T1342 10250T1343	2 3	10250T3042 10250T3043
		2 3	10250T1352 10250T1353	2 3	10250T3052 10250T3053
4-Position — 40° Throw		7	10250T1367	7	10250T3067

① M = Maintained. S = Spring return in direction of arrow (→).

② For selection of the proper cam and contact block to obtain the proper circuit sequence, see selection instructions and table on **Pages 2-132 – 2-133**.

③ Field convertible to Horizontal Mounting or order operator only and separate operator cap.

Table 2-215. Key Operators with Cam — UL (NEMA) 3, 3R, 4, 4X, 12, 13

Positions	Operator Action ④	Cam Code ⑤	Optional Key Removal Positions ⑥	Vertical Mounting	Horizontal Mounting
				Catalogue Number	Catalogue Number
2-Position — 60° Throw		1	1, 2, 3	10250T1511_	10250T1611_
		1	2	10250T1571_	10250T1581_
3-Position — 60° Throw		2 3	1 – 7	10250T1522_ 10250T1523_	10250T1622_ 10250T1623_
		2 3	1, 4, 5	10250T1532_ 10250T1533_	10250T1632_ 10250T1633_
		2 3	4	10250T1542_ 10250T1543_	10250T1642_ 10250T1643_
		2 3	2, 4, 6	10250T1652_ 10250T1653_	10250T1662_ 10250T1663_
4-Position — 40° Throw		7	7	10250T1677_	10250T1687_

④ M = Maintained. S = Spring return in direction of arrow (→).

⑤ For selection of the proper cam and contact block to obtain the proper circuit sequence, see selection instructions and table on **Pages 2-132 – 2-133**.

⑥ Choose key removal position required for application from **Table 2-216** on **Page 2-135**. Add key removal Code No. to listed Catalogue Number.
Example: 10250T15112.

Accessories **Pages 2-154 – 2-155**
 Contact Blocks **Page 2-147**
 Dimensions **Pages 2-159 – 2-161**
 Enclosures **Pages 2-152 – 2-153**
 Legend Plates **Pages 2-150 – 2-151**

Selector Switch Operators (Continued)

Table 2-216. Key Removal Positions

Code Suffix	Key Removal Positions	Code Suffix	Key Removal Positions
1	Right Only	5	Right & Centre
2	Left Only	6	Left & Centre
3	Right & Left	7	All Positions
4	Centre Only		

Note: Key removal in “spring return from” positions not recommended.

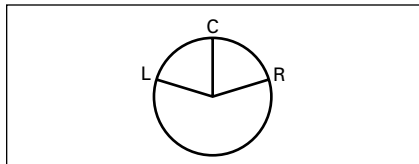


Figure 2-94. Key Removal Positions

Replacement Keys or Dissimilar Locks for Key Operators

Operators listed on **Page 2-134** have identical locks and keys (Key Code H661) Catalogue Number 10250ED824. For dissimilar lock and key combinations, see listing at right.

Table 2-217. Replacement Key

Description	Catalogue Number
Replacement Keys (Code H661)	10250ED824

Selector Switch Operators with Dissimilar Locks and Keys — UL (NEMA) 4, 4X and 13

The locks in all key operators listed on **Pages 2-120, 2-134 and 2-179** are identical and use key code number H661. Two keys are supplied with every lock. For additional code number H661 keys, order **Catalogue Number 10250ED824**. For others, order 10250ED1130 and designate lock number. When dissimilar locks for each operator or each group of operators are required, select from the lock and key combination listed below. **When Ordering Operator Only** or a Complete Control Unit with a substitute lock, order from table below and add “except Lock and Key Code No. ...”

Table 2-218. “H” Series Locks without Master Key — with Key Slot Cover

Lock and Key Code Numbers		
H501	H635	H663
H620	H639	H675
H621	H643	H683
H634	H654	H688

Table 2-219. “M” Series Locks with Master Key — with Key Slot Cover

Lock and Key Code Numbers			
MD1	MD14	ME8	MJ6
MD2	MD15	ME11	MJ10
MD3	MD16	ME16	MJ11
MD4	MD19	ME17	MJ13
MD5	MD20	ME18	MJ15
MD7	ME2	ME19	MJ16
MD9	ME3	MJ1	MD17
MD10	ME5	MJ3	
MD11	ME6	MJ4	
MD13	ME7	MJ5	

Table 2-220. Master Keys for Above Locks

Application	Catalogue Number
For Code:	
MD1 – MD20	10250ED825-3
ME2 – ME18	10250ED825-4
MJ1 – MJ16	10250ED825-5