

## Insulating Bushings

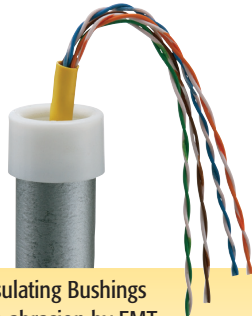
Press fit. Holds firmly in place while pulling cables.



EMT50



EMT400S



**Example:**  
Telephone cable protected by EMT insulating bushing.

Arlington's EMT Insulating Bushings protect cables from abrasion by EMT. Examples: Power, Cable TV, computer datalines, telephone/modem, audio/video cables, alarm systems, security systems. EMT is often used to protect cables where damage could occur in a house or building.

Scan For More Information



CATALOG NUMBER	UPC/DCI/NAED MFG #018997	TRADE SIZE	UNIT PKG	STD PKG	DIM A	DIM B
EMT50	12200	1/2	100	1000	.531	.840
EMT75	12205	3/4	100	1000	.531	1.056
EMT100	12220	1	100	100	.625	1.280
EMT125	12225	1-1/4	100	100	.625	1.660
EMT150	12230	1-1/2	100	100	.625	1.915
EMT200	12235	2	50	50	.625	2.377
EMT250*	12240	2-1/2	25	25	1.225	3.062
EMT300*	12245	3	25	25	1.225	3.690
EMT350*	12250	3-1/2	25	25	1.231	4.187
EMT400*	12255	4	25	25	1.233	4.815
Split Insulating Bushings						
EMT200S	15301	2	50	50	0.875	2.327
EMT250S*	12270	2-1/2	25	25	1.240	3.065
EMT300S*	12271	3	25	25	1.240	3.695
EMT350S*	12272	3-1/2	25	25	1.240	4.311
EMT400S*	22001	4	25	25	1.240	4.812

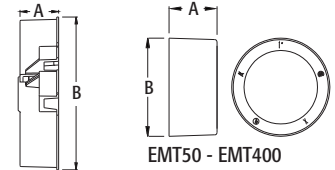
**NEW!**

Refer to page I-1 for Rigid Insulating Bushings size 1/2" through 4".

\*Can also be used for rigid, IMC, and PVC rigid conduit.



E105706 LR49636

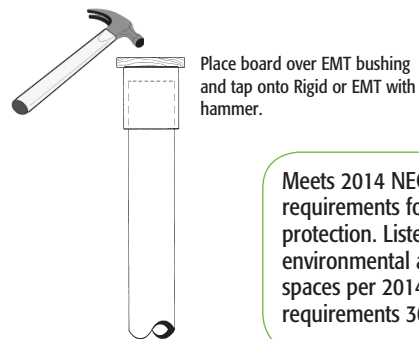
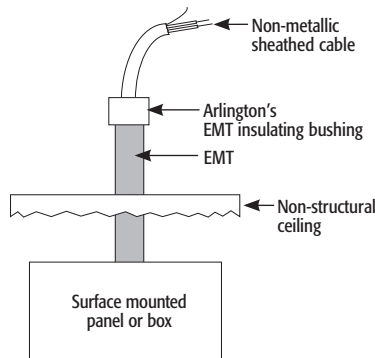


EMT200S - EMT400S



**NEW!**

The new EMT400S insulating bushing is split for easy installation when cables are already in place. They press fit onto conduit and secure with a cable tie. When used for cable protection only, these insulating bushings are a perfect substitution for costly fittings.



Place board over EMT bushing and tap onto Rigid or EMT with hammer.

Meets 2014 NEC code requirements for 300.15(c) protection. Listed for use in environmental air handling spaces per 2014 NEC code requirements 300.22(c).