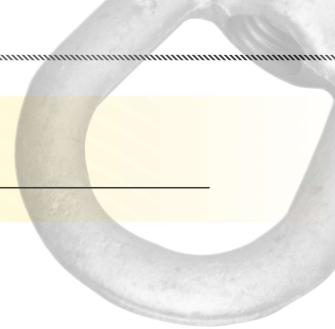


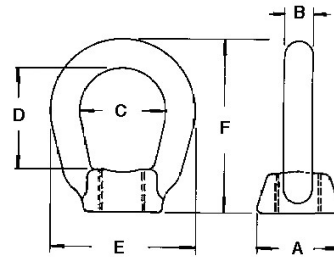
Eyenuts



STANDARD EYENUTS

Most commonly used for deadending, back-guying and attaching pole head guys on the threaded ends of crossarm bolts. Drop-forged, hot-dip galvanized steel.

Catalog Number	Dimensions Inches							Approx Ship Wt lb Each
	For Bolt Diameter	A	B	C	D	E	F	
6500	1/2	1 1/4	1/2	1 1/8	1 1/8	2 1/8	2 5/8	0.51
6501	5/8	1 1/4	1/2	1 1/8	1 1/8	2 1/8	2 5/8	0.46
6502 ⁽¹⁾⁽²⁾	5/8	1 3/8	1/2	1 1/2	1 3/4	2 1/2	3	0.63
6503 ⁽²⁾	3/4	1 3/8	1/2	1 1/2	1 3/4	2 1/2	3	0.54



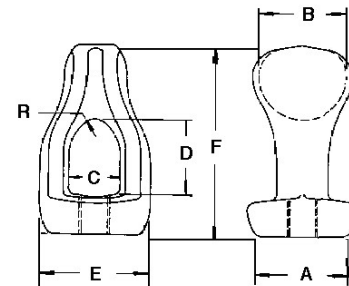
No 6502

- (1) RUS listed.
- (2) ANSI standard, C-135.5.

THIMBLEYE® EYENUTS

For attaching to thru-bolts or threaded end of straight or angle Thimbleye bolts for straight-away head guys. Drop-forged galvanized steel. Nuts are contoured to minimize bending and kinking of guy strand.

Catalog Number	Dimensions Inches								
	Tapped For Bolt	A	B	C	D	E	F	R	Approx Ship Wt lb Each
6510 ⁽¹⁾⁽²⁾	5/8	1 1/2	1 1/2	7/8	1 3/8	1 7/8	3 1/4	1/4	0.78
6511 ⁽²⁾	3/4	1 1/2	1 1/2	7/8	1 3/8	1 7/8	3 1/4	1/4	0.72
6512	1	1 1/8	1 5/8	1 1/8	1 19/32	2 25/64	3 1/4	1 3/32	1.80



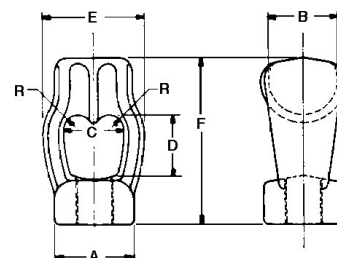
No 6510

- (1) RUS listed.
- (2) ANSI standard, C-135.5.

TWINEYE® EYENUTS

Used for head or stub guying of two strands, Twineye Eyenuts can be attached to thru-bolts or threaded end of straight or angle Thimbleye bolts. Grooves are contoured to protect guy strands. Drop-forged galvanized steel.

Catalog Number	Dimensions Inches								
	Tapped For Bolt	A	B	C	D	E	F	R	Approx Ship Wt lb Each
6560	3/4	1 7/8	1 11/16	1 1/8	1 5/16	2 3/8	3 5/8	1 1/16	1.90
6561	3/4	1 7/8	1 11/16	1 1/8	1 5/16	2 3/8	3 5/8	1 1/16	1.84
6562 ⁽¹⁾	1 and PISA	1 7/8	1 11/16	1 1/8	1 5/16	2 3/8	3 5/8	1 1/16	1.88



No 6562

- (1) Catalog Number 6562 eyenut fits both 1" bolts and 1" PISA rods.