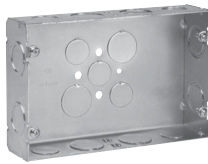


# Steel Gang Boxes

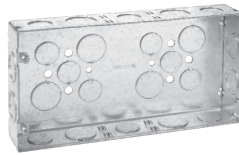
## GANG BOXES

1 5/8" DEEP x 4 1/2" HIGH  
1/2" & 3/4" KOs

UL LISTED



TP629



TP630



TP640

CP

### KNOCKOUTS

Cat. #	Gang	Cubic Inches	Width	Each Side	Each End	Bottom	Unit Qty.	Wt. Lbs. Per 100
TP629	2	45	6 3/16"	2 - 1/2", 2 - 3/4"	1 - 1/2", 1 - 3/4"	3 - 1/2", 2 - 3/4"	5	45
TP630	3	58	8 5/8"	3 - 1/2", 2 - 3/4"	1 - 1/2", 1 - 3/4"	6 - 1/2", 4 - 3/4"	5	58
TP631	4	70	10 7/16"	3 - 1/2", 3 - 3/4"	1 - 1/2", 1 - 3/4"	6 - 1/2", 4 - 3/4"	5	70
TP640	5	85	12 1/4"	4 - 1/2", 3 - 3/4"	1 - 1/2", 1 - 3/4"	6 - 1/2", 4 - 3/4"	1	85
TP641	6	95	14 1/16"	4 - 1/2", 4 - 3/4"	1 - 1/2", 1 - 3/4"	6 - 1/2", 4 - 3/4"	1	95

## GANG BOXES

2 1/2" DEEP x 4 1/2" HIGH  
3/4" & 1" KOs

UL LISTED



TP871

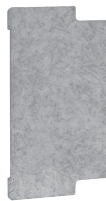


TP873

### KNOCKOUTS

Cat. #	Gang	Cubic Inches	Width	Each Side	Each End	Bottom	Unit Qty.	Wt. Lbs. Per 100
TP870	2	71	6 3/16"	2 - 3/4", 1 - 1"	1 - 3/4", 1 - 1"	3 - 1/2", 2 - 3/4"	10	147
TP871	3	90	8 5/8"	4 - 3/4", 1 - 1"	1 - 3/4", 1 - 1"	6 - 1/2", 4 - 3/4"	10	183
TP872	4	110	10 7/16"	2 - 3/4", 2 - 1"	1 - 3/4", 1 - 1"	6 - 1/2", 4 - 3/4"	5	216
TP873	5	132	12 1/4"	3 - 3/4", 2 - 1"	1 - 3/4", 1 - 1"	6 - 1/2", 4 - 3/4"	5	263
TP874	6	150	14 1/16"	3 - 3/4", 3 - 1"	1 - 3/4", 1 - 1"	6 - 1/2", 4 - 3/4"	5	282

## GANG BOX PARTITIONS



TP876



TP877

Cat. #	Description	Unit Qty.	Wt. Lbs. Per 100
TP876	For 1 5/8" Deep Box	25	19
TP877	For 2 1/2" Deep Box	50	24

Crouse-Hinds

by E.T.O.N

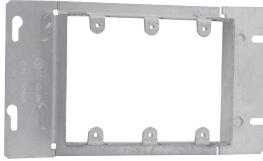
# Steel Gang Box Covers

## GANG BOX COVERS

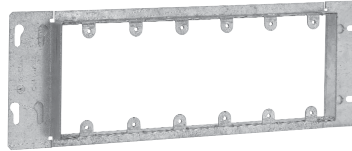
RAISED  $1\frac{3}{16}$ " FOR PLASTER

UL LISTED

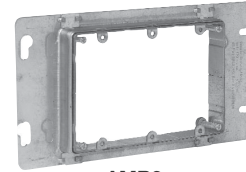
CP



TP653



TP667



AMR3

Cat. #	Gang	Length	Unit Qty.	Wt. Lbs. Per 100	Capacity Cu. In.
TP657	2	7"	5	53	8.5
TP653	3	8 $\frac{13}{16}$ "	5	60	13.5
AMR3**	3	$\frac{3}{4}$ "-1- $\frac{1}{2}$ " Raised Adjustable	25	78	10.4
TP655	4	10 $\frac{7}{8}$ "	5	66	18.3
TP661	5	12 $\frac{7}{16}$ "	5	75	23.0
TP667	6	14 $\frac{1}{4}$ "	5	85	28.3

\*\*ETL Listed

## GANG BOX COVERS, FLAT, BLANK

UL LISTED



TP803



TP806

Cat. #	Gang	Length	Unit Qty.	Wt. Lbs. Per 100
TP802	2	7"	5	66
TP803	3	8 $\frac{13}{16}$ "	5	85
TP804	4	10 $\frac{7}{8}$ "	5	94
TP805	5	12 $\frac{7}{16}$ "	1	122
TP806	6	14 $\frac{1}{4}$ "	1	132