

Mechanical Connectors

UNITAP™ Clear Insulated Multi-Tap UL Listed for Code and Flex Conductor



UNITAP™ Clear Insulated Multi-Tap

UL Listed 486A-486B

UNITAP™ Clear Insulated Multi-Tap is UL Listed to the UL Wire Connector Standard UL486A-486B and CSA Certified for use with flexible (fine stranded) conductor - with no ferrules required! Featuring color coordinated conductor port and screw port caps making it easy to identify the maximum conductor size accommodated by the connector.

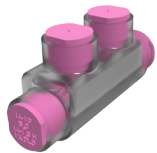
A disc-pad screw has also been incorporated to prevent damage to the fine strands as the conductor is compressed during installation. The connectors are shipped with the 'pad' attached to the screw by a thin stem; during installation the pad is sheared from the stem as it makes contact with the conductor and remains stationary as the screw continues to rotate until the recommended installation torque is achieved.

The color coordinated conductor port caps display the wire range and classes of conductor accepted by the specific connector. The screw port caps show the installation torque information for quick and easy reference during installation.



Features & Benefits

- 600 Volt Rated
- Fully Insulated Aluminum 6061-T6 connector body saves time and lowers installation costs by eliminating the need for taping
- Listed to UL486A-B (File E9498)
- CSA Certified to C22.2, No. 65 (File 042860_c_00)
- Rated for use with flex conductor (No Ferrules Required!)
- AL9CU dual rated for use with copper and aluminum conductors
- Range taking designs will accommodate wire sizes from #14-750 kcmil Class B & C, and #14-535 DLO Flex
- Configurations include Taps, In-Line Splice Reducers, Single-Sided Entry, and Double-Sided Entry with the number of ports from 2 to 14
- Clear Plastisol Insulation allows visual confirmation that conductor is properly inserted into port
- Operating temperature from -40°C to 135°C
- Conductor ports are pre-filled with oxide inhibitor
- Screw Port and Conductor Port caps provided to protect against contamination and accidental contact of energized parts
- Caps are color coordinated to quickly identify maximum conductor size accommodated
- Screw Port caps contain recommended installation torque values for quick and easy reference
- Conductor Port caps contain the accommodated wire range and allowable conductor classes



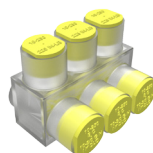
In-Line Splice Reducer

Figure 1



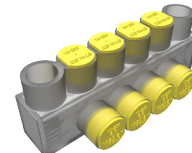
Tap - Opposite Side Entry

Figure 2



Multiple Port Tap
Single Sided Entry

Figure 4



Multiple Port Mounted Tap
Single Sided Entry

Figure 6



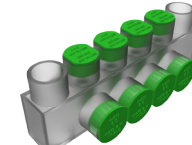
Tap - Same Side Entry

Figure 3



Multiple Port Tap
Double Sided Entry

Figure 5



Multiple Port Mounted Tap
Double Sided Entry

Figure 7

Blue highlighted items are industry standard and most frequently ordered.

US: 1-800-346-4175 / International: 1-603-647-5299 / Canada: 1-800-387-6487 / www.burndy.com

Mechanical Connectors

UNITAP™ Clear Insulated Multi-Tap UL Listed for Code and Flex Conductor



UNITAP™

(Continued)

Wire Range (AWG/kcmil)	Amp Rating	# of Ports	Configuration	Size (inches)			Hex Key	Catalog Number	Cap Color	Fig. #		
				Length	Width	Height						
#14-#2 Class B & C #14-#2 Class G,H,I,K, DLO	115 A	2	In-Line Splice Reducer	2.38	0.75	1.22	5/32	BISR2FX	Brown	1		
#14-#4 Class B & C #14-#1 Class G,H,I,K, DLO	85 A	2	Tap - Opposite Side Entry	1.08	1.50	1.25	1/8	BITO4FX	Brown	2		
		2	Tap - Same Side Entry	1.08	1.16	1.25	1/8	BIT4FX	Brown	3		
		3	Single Sided Entry	1.51	1.16	1.25	1/8	BIBS43FX	Brown	4		
		4		BIBS44FX								
		5		BIBS45FX								
		6		BIBS46FX								
		8		BIBS48FX								
		2	Double Sided Entry	1.08	1.50	1.25	1/8	BIBD42FX	Brown	5		
		3		BIBD43FX								
		4		BIBD44FX								
		5		BIBD45FX								
		6		BIBD46FX								
		8		BIBD48FX								
		#14-1/0 Class B & C #14-#1 Class G,H,I,K, DLO	150 A	2	In-Line Splice Reducer	2.91	0.75	1.22	5/32	BISR1/0FX	Pink	1
		#14-2/0 Class B & C #14-#1 Class G,H,I,K, DLO	175 A	2	Tap - Opposite Side Entry	1.52	1.56	1.38	3/16	BITO2/0FX	Black	2
				2	Tap - Same Side Entry	1.52	1.40	1.38	3/16	BIT2/0FX	Black	3
				3	Single Sided Entry	2.19	1.31	1.38	3/16	BIBS2/03FX	Black	4
				4		BIBS2/04FX						
5	BIBS2/05FX											
6	BIBS2/06FX											
8	BIBS2/08FX											
10	BIBS2/010FX											
12	BIBS2/012FX											
14	BIBS2/014FX											
2	Double Sided Entry			1.52	1.56	1.38	3/16	BIBD2/02FX	Black	5		
3				BIBD2/03FX								
4				BIBD2/04FX								
5				BIBD2/05FX								
6				BIBD2/06FX								
8				BIBD2/08FX								
10				BIBD2/010FX								
12				BIBD2/012FX								
14		BIBD2/014FX										

Blue highlighted items are industry standard and most frequently ordered.

US: 1-800-346-4175 / International: 1-603-647-5299 / Canada: 1-800-387-6487 / www.burndy.com

Mechanical Connectors

UNITAP™ Clear Insulated Multi-Tap UL Listed for Code and Flex Conductor



UNITAP™

(Continued)

Wire Range (AWG/kcmil)	Amp Rating	# of Ports	Configuration	Size (inches)			Hex Key	Catalog Number	Cap Color	Fig. #								
				Length	Width	Height												
#14-2/0 Class B & C #14-#1 Class G,H,I,K, DLO	175 A	4	Mountable Single Sided Entry	4.20	1.25	1.50	3/16	BIBS2/04FXMT	Black	6								
		6		5.55				BIBS2/06FXMT										
		8		6.89				BIBS2/08FXMT										
		10		8.24				BIBS2/010FXMT										
		12		9.58				BIBS2/012FXMT										
		4	Mountable Double Sided Entry	4.20	1.56	1.50	3/16	BIBD2/04FXMT	Black	7								
		8		6.89				BIBD2/08FXMT										
		10		8.24				BIBD2/010FXMT										
		12		9.58				BIBD2/012FXMT										
		2		Tap - Opposite Side Entry				2.03			2.64	2.13	5/16	BITO250FX	Yellow	2		
2	Tap - Same Side Entry	2.03	2.07	2.13	5/16	BIT250FX	Yellow	3										
2	In-Line Splice Reducer	4.01	1.19	2.10	5/16	BISR250FX	Yellow	1										
#10-250 Class B & C #10-3/0 Class G,H,I,K, DLO	255 A	3	Single Sided Entry	2.97	2.07	2.13	5/16	BIBS2503FX	Yellow	4								
		4		3.91				BIBS2504FX										
		5		4.84				BIBS2505FX										
		6		5.78				BIBS2506FX										
		8		7.66				BIBS2508FX										
		10		9.53				BIBS25010FX										
		12		11.41				BIBS25012FX										
		14		13.29				BIBS25014FX										
		#10-250 Class B & C #10-3/0 Class G,H,I,K, DLO		255 A				2			Double Sided Entry	2.03	2.64	2.13	5/16	BIBD2502FX	Yellow	5
								3				2.97				BIBD2503FX		
4	3.91		BIBD2504FX															
5	4.84		BIBD2505FX															
6	5.78		BIBD2506FX															
8	7.66		BIBD2508FX															
10	9.53		BIBD25010FX															
12	11.41		BIBD25012FX															
14	13.29		BIBD25014FX															
4	Mountable Single Sided Entry		5.78		1.95	2.63	5/16	BIBS2504FXMT	Yellow	6								
6			7.65					BIBS2506FXMT										
8			9.53					BIBS2508FXMT										
10			11.41					BIBS25010FXMT										
12			13.29					BIBS25012FXMT										
4	Mountable Double Sided Entry		5.78		2.64	2.63	5/16	BIBD2504FXMT	Yellow	7								
6			7.65					BIBS2506FXMT										
8			9.53					BIBD2508FXMT										
10			11.41					BIBD25010FXMT										
12			13.29					BIBD25012FXMT										

Blue highlighted items are industry standard and most frequently ordered.

US: 1-800-346-4175 / International: 1-603-647-5299 / Canada: 1-800-387-6487 / www.burndy.com

Mechanical Connectors

UNITAP™ Clear Insulated Multi-Tap UL Listed for Code and Flex Conductor



UNITAP™

(Continued)

Wire Range (AWG/kcmil)	Amp Rating	# of Ports	Configuration	Size (inches)			Hex Key	Catalog Number	Cap Color	Fig. #
				Length	Width	Height				
#10-350 Class B & C #10-250 Class G,H,I,K, DLO	310 A	2	Tap - Opposite Side Entry	2.22	3.00	2.50	5/16	BITO350FX	Red	2
		2	Tap - Same Side Entry	2.22	2.32	2.50	5/16	BIT350FX	Red	3
		2	In-Line Splice Reducer	4.63	1.34	2.35	5/16	BISR350FX	Red	1
		3	Single Sided Entry	3.13	2.32	2.50	5/16	BIBS3503FX	Red	4
		4		4.04				BIBS3504FX		
		5		4.95				BIBS3505FX		
		6		5.86				BIBS3506FX		
		8		7.68				BIBS3508FX		
		10		9.50				BIBS35010FX		
		12		11.32				BIBS35012FX		
		14		13.14				BIBS35014FX		
		2	Double Sided Entry	3.13	3.00	2.50	5/16	BIBD3502FX	Red	5
		3		4.04				BIBD3503FX		
		4		4.95				BIBD3504FX		
		5		5.86				BIBD3505FX		
		6		7.68				BIBD3506FX		
		8		9.50				BIBD3508FX		
		10		11.32				BIBD35010FX		
		12		13.14				BIBD35012FX		
		4	Mountable Single Sided Entry	5.86	2.32	2.63	5/16	BIBS3504FXMT	Red	6
		6		7.68				BIBS3506FXMT		
		8		9.50				BIBS3508FXMT		
		10		11.32				BIBS35010FXMT		
		12		13.14				BIBS35012FXMT		
		4	Mountable Double Sided Entry	5.86	3.00	2.63	5/16	BIBD3504FXMT	Red	7
		6		7.68				BIBD3506FXMT		
		8		9.50				BIBD3508FXMT		
		10		11.32				BIBD35010FXMT		
		12		13.14				BIBD35012FXMT		
		#6-500 Class B & C #6-373 Class G,H,I,K, DLO	380 A	2	In-Line Splice Reducer	5.00	1.62	2.62	3/8	BISR500FX
#4-600 Class B & C #4-373 Class G,H,I,K, DLO	420 A	2	Tap - Opposite Side Entry	2.72	3.00	2.75	3/8	BITO600FX	Green	2
		2	Tap - Same Side Entry	2.72	2.38	2.75	3/8	BIT600FX	Green	3
		3	Single Sided Entry	4.00	2.38	2.75	3/8	BIBS6003FX	Green	4
		4		5.28				BIBS6004FX		
		5		6.56				BIBS6005FX		
		6		7.84				BIBS6006FX		

Blue highlighted items are industry standard and most frequently ordered.

US: 1-800-346-4175 / International: 1-603-647-5299 / Canada: 1-800-387-6487 / www.burndy.com

Mechanical Connectors

UNITAP™ Clear Insulated Multi-Tap UL Listed for Code and Flex Conductor



UNITAP™

(Continued)

Wire Range (AWG/kcmil)	Amp Rating	# of Ports	Configuration	Size (inches)			Hex Key	Catalog Number	Cap Color	Fig. #
				Length	Width	Height				
#4-600 Class B & C #4-373 Class G,H,I,K, DLO	420 A	8	Single Sided Entry	10.41	2.38	2.75	3/8	BIBS6008FX	Green	4
		10		12.97				BIBS60010FX		
		12		15.53				BIBS60012FX		
		14		18.09				BIBS60014FX		
		2	Double Sided Entry	2.72	3.00	2.75	3/8	BIBD6002FX	Green	5
		3		4.00				BIBD6003FX		
		4		5.28				BIBD6004FX		
		5		6.56				BIBD6005FX		
		6		7.84				BIBD6006FX		
		8		10.41				BIBD6008FX		
		10		12.97				BIBD60010FX		
		12		15.53				BIBD60012FX		
		14	18.09	BIBD60014FX						
		4	Mountable Single Sided Entry	5.53	2.25	2.88	3/8	BIBS6004FXMT	Green	6
		6		7.40				BIBS6006FXMT		
		8		9.28				BIBS6008FXMT		
		12		13.03				BIBS60012FXMT		
		4	Mountable Double Sided Entry	5.53	3.00	2.88	3/8	BIBD6004FXMT	Green	7
		6		7.40				BIBD6006FXMT		
		8		9.28				BIBD6008FXMT		
10	11.16	BIBD60010FXMT								
12	13.03	BIBD60012FXMT								
#2-750 Class B & C #2-535 Class G,H,I,K, DLO	475 A	2	Tap - Opposite Side Entry	2.87	3.38	3.00	3/8	BITO750FX ¹	Black	2
		2	Tap - Same Side Entry	2.87	2.70	3.00	3/8	BIT750FX ¹	Black	3
		3	Single Sided Entry	4.00	2.70	3.00	3/8	BIBS7503FX ¹	Black	4
		4		5.38				BIBS7504FX ¹		
		6		8.13				BIBS7506FX ¹		
		8		10.88				BIBS7508FX ¹		
		10		13.63				BIBS75010FX ¹		
		12		16.38				BIBS75012FX ¹		
		14		19.13				BIBS75014FX ¹		
		2	Double Sided Entry	2.87	3.38	3.00	3/8	BIBD7502FX ¹	Black	5
		3		4.25				BIBD7503FX ¹		
		4		5.63				BIBD7504FX ¹		
		6		8.37				BIBD7506FX ¹		
		8		11.13				BIBD7508FX ¹		
10	13.87	BIBD75010FX ¹								
12	16.63	BIBD75012FX ¹								
14	19.37	BIBD75014FX ¹								

Notes:

¹ NOT UL Listed

Blue highlighted items are industry standard and most frequently ordered.

US: 1-800-346-4175 / International: 1-603-647-5299 / Canada: 1-800-387-6487 / www.burndy.com