

Stud Connector, Bronze

By ANDERSON
Catalog # [HDSF111D389012](#)

Bronze alloy stud connector for connecting copper flat pad to copper stud. Tongue holes have NEMA hole spacing with contact surface on both sides. Material: casting - bronze alloy, hardware - silicon bronze or stainless steel. To specify 90 deg connector, insert "90" into catalog number. Example: HDSF141338B9012.

Features

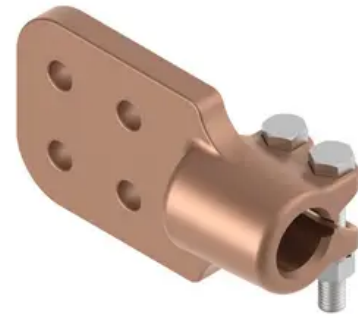
"To specify 90 degree connector, add "90" to catalog number. Example: HDSF1013389014TP"

General

Catalog Number	HDSF111D389012
EU RoHS Indicator	No
Material	Bronze
Material - Clamping Hardware	Stainless Steel
Number of Ground Braid Lug Holes	0
Number of Pad Holes	4
Number of Stud Threads	12
Type	Stud to Flat
UPC	096359315766

Dimensions

Angle - Stud to Pad	90 °
Base Hole Spacing	0 in
Diameter - Base Holes	0 in
Diameter - Bolt	0 in



*Representative Image

Diameter - Inside	0 in
Diameter - Stud	1.125 in
Length - Coupling	0 in
Length Before Compression	0 in
Weight	4.998 lb
Width - Pad	4 in

Electrical Ratings

Maximum Current Rating Amps Continuous	0
--	---

Certifications And Compliance

Buy America(n) Qualified Contact Manufacturer

Product Assets

- [Catalogs - Substation Connectors \(SA\)](#)
- [Sales Drawings - CC-5850 \(HDSF Product Family\)](#)
- [Specifications - HDSF111D389012](#)
- [Video - Hubbell Power Systems 3D Portal to help with developing 3D models of substation connector products](#)
- [Video - Hubbell Power Systems Quick Ship](#)