

Type C-Polymer STANDARD Cutout

Interchangeability

Chance was the first to design a cutout that could interchange fuseholders and mounting assemblies with those of another manufacture. Standard Type C fuseholders and mounting assemblies are mutually interchangeable with the S&C Electric Company's Type XS cutout (within the same voltage class).

The Type C-Polymer Standard cutout is mutually interchangeable with Chance Type C Porcelain Standard cutout.

Synthetic Arc-Quenching Fusetube

The 1/2-inch inside diameter of the Type C-Polymer cutout's 100 ampere fusetube increases internal pressure giving superior and reliable expulsion action. During frequently encountered intermediate fault ranges this diameter also permits higher TRV (transient recovery voltage) values to be tolerated. This small bore design eliminates any concern related to high impedance phase-to-phase faults on ungrounded wye and delta systems.

The inside liner is a synthetic arc-quenching formulation in part consisting of polyester fiber, epoxy and Aluminum Tri Hydrate. The liner is chemically bonded to the tube's glass-reinforced shell. This combination provides a moisture source to extinguish the arc during interrupt operations without absorption of atmospheric moisture leading to potential swelling and delamination, and provides a high bursting strength. It is protected from the weather and environment by a special ultra-violet resistant coating. For more information on the synthetic arc-quenching material, refer to Bulletin 10-0201.

The Hubbell fuse tube operates with fuselinks from all major suppliers.

100 amp or smaller fuselinks shall not be used in 200-amp fuseholders.

Brackets

Type C-Polymer cutouts come packed one per carton including a NEMA Heavy Duty "B" bracket with captive 1 1/2" bolt for crossarm mounting.

Type X brackets, also for crossarm mounting, provides 2 5/8" additional clearance between the crossarm and the cutout.

"D" brackets are used to mount cutouts and/or arresters directly to the pole. Three brackets may be used for three-phase application. Type D brackets provide a clean, quick mounting without crossarm or special pole bands.

All the above brackets are galvanized steel for long lasting service. Cutouts can be ordered without any brackets.

Higher Interrupt Capacities

By using a copper arc shortening rod inside the top of the fusetube, higher interrupt ratings are obtainable. An arc shortening rod is attached to the cap of some fusetubes and lowers the fuse link within the fusetube. This permits a much shorter arc, resulting in less arc energy, and higher interrupting capacities. For 200 A tubes, it allows for full voltage ratings.

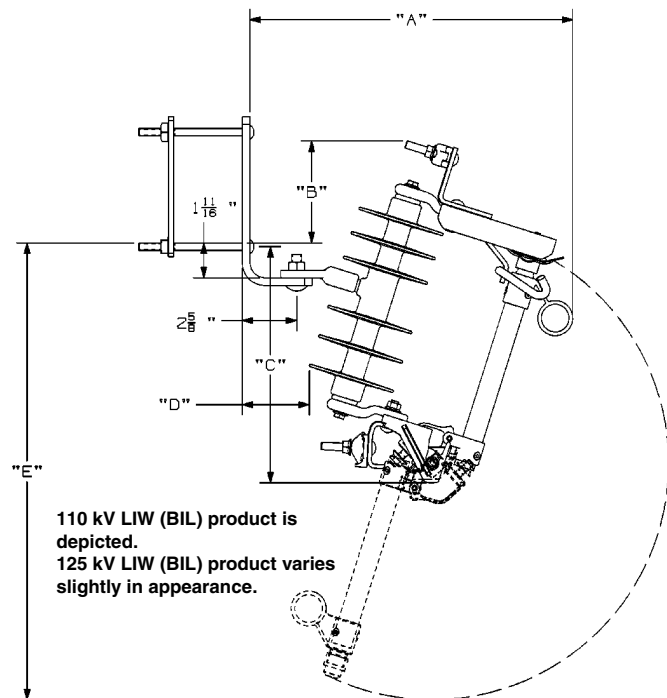
It is necessary to use fuse links with removable buttonheads when arc shortening rods are employed.

Terminals

Tin-plated bronze parallel groove type terminals are standard on Type C cutouts. They can accommodate aluminum or copper conductor sizes ranging from No. 6 (13.3 mm²) solid copper through 4/0 (160.6 mm²) ACSR or 250 (167.5 mm²) kcmil stranded copper. The parallel groove design is perfect for handling two different sizes of conductor as is the case when arresters are being used. Eyebolts are also available. See ordering data, page 10AA-11.



100 Amp –
Single Vent
15 kV/110 kV LIW (BIL)



STANDARD Type C-Polymer Cutout with NEMA Type B Bracket

kV LIW (BIL)	A	B	C	D	E
110	15 5/8"	4 7/8"	11 5/8"	3 1/4"	22 1/16"
	395 mm	125 mm	295 mm	82 mm	561 mm
125	16 1/16"	6 5/8"	13 1/16"	2 7/8"	27"
	408 mm	167 mm	332 mm	72 mm	686 mm

Type C-Polymer STANDARD Cutout

Specifications and Ordering Information

All Type C Cutouts meet or exceed ANSI/NEMA specifications.

See page 10AA-11 for Accessories.

U.S. Patent 4,546,341; 6,392,526; 6,593,842

15 kV - 110 kV LIW (BIL) RUS LISTED

*Base Catalog No.	*Option suffixes below	Maximum Design Voltage	Nominal System Voltage	Continuous Current (Amps)	Interrupt Capacity (Asym Amps)	Leakage to Ground Metal to Metal		*Weight (lb./kg.)	Replacement Fusetube Cap	Arc Shortening Rod
CP710112	1 2 3	15 kV	Thru 14.4 kV	100	10,000	12.6"	319 mm	9.6/4.4	P7001535P	No
CP710114	1 2 3	15 kV	Thru 14.4 kV	100	16,000	12.6"	319 mm	9.8/4.5	E7001767P	Yes [‡]
CP710143	1 2 3	15 kV	Thru 14.4 kV	200	12,000	12.6"	319 mm	10.4/4.7	E7002146P	Yes [‡]
CP710133	1 2 3	15 kV	Thru 14.4 kV	300	12,000**	12.6"	319 mm	9.9/4.5	P7001535P	N/A

27 kV - 125 kV LIW (BIL)

CP710211	1 2 3	27 kV	Thru 24.9 kV	100	8,000	17.1"	434 mm	11.0/5.0	P7001535P	No
CP710213	1 2 3	27 kV	Thru 24.9 kV	100	12,000	17.1"	434 mm	11.0/5.0	E7001768P	Yes [‡]
CP710242	1 2 3	27 kV	Thru 24.9 kV	200	10,000	17.1"	434 mm	11.6/5.3	E7002479P	Yes [‡]
CP710233	1 2 3	27 kV	Thru 24.9 kV	300	12,000**	17.1"	434 mm	11.2/5.1	P7001535P	N/A

**Momentary rating -Solid blade. [‡]Must use removable buttonhead fuse links. *Adjust total weight when selecting Options below.

*Option Suffix 1

Terminal Variations

Suffix 1	Description	*Weight (lb./kg.)
P	Parallel-groove clamps	0.33/0.15
E	Small eyebolts	0.16 /0.07
L	Large eyebolts	0.31/0.14

Must specify one selection for Option 1.

*Option Suffix 2

Bracket Variations

Suffix 2	Description	*Weight (lb./kg.)
B	NEMA Heavy Duty "B" bracket for crossarm (1½" bolt)	2.84/1.29
X	Extended type bracket for crossarm (Horizontal section is 2⅝" longer than Type B bracket)	3.75/1.70
D	D-shape bracket (pole)	7.67/3.48
Z	No bracket (must be used with M in Option 3)	—
Blank	No bracket (cannot use with M in Option 3)	—

*Option Suffix 3

Mechanical Assist Fuseholder

Suffix 3	Description
Blank	No option (may not be used with Z in Option 2)
M	Mechanical Assist Fuseholder (may not be used with Blank in Option 2)
F	Fargo cutout cover (available for 15 kV only) (may not be used with Blank in Option 2)

Fuseholders and Mounting Assemblies

15 kV - 110 kV LIW (BIL)

Cutout Base Catalog Number	Fuseholder or Blade only Catalog No.	Weight		Mounting Assembly only *Base Catalog No.	*Weight	
CP710112	T710112T	1.8 lb.	0.76 kg.	TP7101MM	8.0 lb.	3.6 kg.
CP710114	T710114T	2.0 lb.	0.79 kg.			
CP710143	T710143T	2.6 lb.	1.18 kg.			
CP710133	T710133T	2.1 lb.	0.95 kg.			

27 kV - 125 kV LIW (BIL)

CP710211	T710211T	1.9 lb.	0.86 kg.	TP7102MM	9.16 lb.	4.1 kg.
CP710213	T710213T	2.0 lb.	0.91 kg.			
CP710242	T710242T	2.5 lb.	1.13 kg.			
CP710233	T710233T	2.1 lb.	0.97 kg.			



100A 200A 300A
Fuseholders Blade

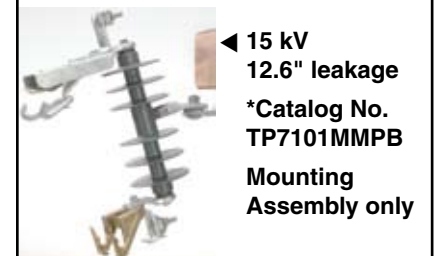


27 kV - 17.1" leakage
TP7102MMPB

*Adjust total weight when selecting Option suffixes above.



100A 200A 300A
Fuseholders Blade



◀ 15 kV
12.6" leakage
*Catalog No.
TP7101MMPB
Mounting
Assembly only

Universal Cutout Tool

Ideal for Standard and Linkbreak 100 amp fuse holders (ABB, Chance S&C) to easily lift out, place, *open and close. Inverted, secure method also fits Chance Electronic Sectionalizers. Cat. No. **PSC4033484** (Wt. 4 oz.) See Tools Catalog Section 2100.

*When opening a cutout, follow all work rules and OSHA regulations. **Not for use with Loadbreak cutouts.**