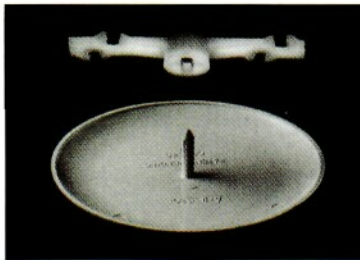




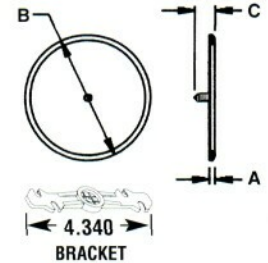
Box Cover

For 3-1/2" and 4" round and octagonal boxes. Used to cover boxes which are added for future use with fixtures or fans. Textured cover is non-metallic, non-conductive and paintable. Will not rust or discolor.



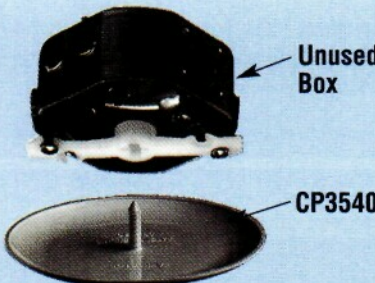
CATALOG NUMBER	UPC/DCI/NAED MFG #01 8997	BOX SIZE	UNIT PKG	STD PKG	DIM A	DIM B	DIM C
CP3540	54090	3-1/2 & 4	1/Bag	50 Bags	.375	5.262	1.070

Two #8-32 x 3/4" flat head screws and bracket are included.
PATENT PENDING.



Features and Benefits

- Covers poorly cut drywall
- Deep dish cover/plate design, covers most fan boxes and electrical boxes.
- Mounting bracket is designed to accommodate both #8 or #10 screws.
- Notched bracket allows for attachment without removing screws.
- Provides a clean installation, leaving no visible screws.



Installation Instructions

“Back out” the screws enough to slip the bracket on...There’s no need to remove them completely.

Then, press the post into the ribbed opening in the bracket to seat the cover firmly in place.

No Screws Show on Ceiling Plate!



Box Covers

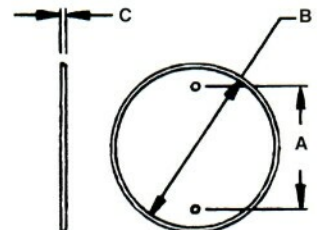
Covers 4" round or octagonal boxes. Non-metallic, non-conductive plastic. Will not rust.

CATALOG NUMBER	UPC/DCI/NAED MFG #01 8997	BOX SIZE	UNIT PKG	STD PKG	DIM A	DIM B	DIM C
CP40	15040	4"	1	40	3.500	2.400	.150



Features and Benefits

- Paintable to blend with any wall or ceiling
- Comes complete with white painted screws to blend with cover
- Made of non-metallic, non-conductive, white plastic material
- Reusable and flexible
- Will not rust or discolor





Standards...

PRODUCT GROUP	UL STANDARD NUMBER	UL FILE NUMBER	UL CONTROL NUMBER	CSA FILE NUMBER	FED SPEC NUMBER	NEMA STANDARD
Liquid-Tight Fittings	UL 514B	E60812	351F	LR49636	W-F-408D W-F-406D	FB-1
EMT Fittings	UL 514B	E20643	365D	LR49636	W-F-406C W-F-408D	FB-1
Non-metallic Cable Connectors	UL 514B	E28474	388D	LR49636	W-F-406C	FB-1
Flexible Cord Connectors	UL 514B	E105706	1B64	LR49636	W-F-406B	FB-1
Armored Cable Connectors	UL 514B	E18304	372D	LR49636	W-F-406C	FB-1
Service Entrance Cable Fittings	UL 514B	E66990	282F	LR49636	W-F-406C	FB-1
Grounding and Bonding Equipment	UL 467	E75814	910F	LR49636	W-F-406C	FB-1
Conduit Bodies	UL 514A UL 514B	E28474	5B36	LR49636	W-F-406	FB-1
Conduit Fittings-Rigid	UL 514B	E60812	351F	LR49636	W-F-406C W-F-408D	FB-1
MC Cable Connectors	UL 514B	E123751	388E	LR49636	W-F-406B	FB-1
Grounding Lugs	UL 514B	E86540	910F	LR49636	W-F-406B	FB-1
Flush Device Box Covers	UL 514A	E48106	910F	LR49636	W-F-406	FB-1

SNAP-TITE® Products Note...

Arlington's metallic SNAP-TITE® products have been tested and listed by UL in accordance with UL's ground fault requirements.

N.E.C. 1999. 250-97. Bonding for Over 250 Volts. For circuits of over 250 volts to ground, the electrical continuity of metal raceways and cables with metal sheaths that contain any conductor other than service conductors shall be ensured by one or more of the methods specified for services in Sections 250-94(1) through (4).

Exception: Where oversized, concentric, or eccentric knockouts are not encountered, or where a box or enclosure with concentric or eccentric knockouts is listed for the purpose, the following methods shall be permitted:

- (a) Threadless couplings and connectors for cables with metal sheaths
- (b) Two locknuts, on rigid metal conduit, or intermediate metal conduit, one inside and one outside of boxes and cabinets
- (c) Fittings with shoulders that seat firmly against the box or cabinet, such as electrical metallic tubing connectors, flexible metal conduit connectors, and cable connectors, with one locknut on the inside of boxes and cabinets
- (d) Listed fittings

Slotted
Phillips
Screw



Arlington Industries has standardized using slotted Phillips screws for our fittings. This design enables contractors to utilize battery powered screwdrivers. This is one more way that Arlington helps to make field labor competitive.