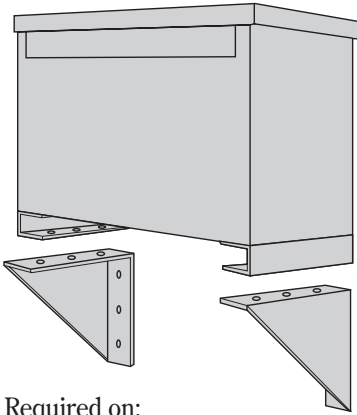


## Wall Brackets, Taps, Thermal Switches and Lug Kits

### Wall Mounting Brackets



Required on:

#### Ventilated Units:

1Ø, 37.5 and 50 KVA

3Ø, 30, 45 and 75 KVA

**Catalog Number: PL-79912**

#### Encapsulated Units:

3Ø DIT., 11 KVA — 20 KVA

3Ø std. distribution — 15 KVA

**Catalog Number: PL-79911**

Wall mounting brackets are not required on:

1Ø units — 25 KVA and below

3Ø units — 9 KVA and below

### Standard Taps

The catalog number suffix provides tap information as outlined below:

Suffix	Tap Arrangement
- 1S	Two 5% (-) BNFC Taps
- 2S	One 5% (+) ANFC Tap and One 5% (-) BNFC Tap
- 3S	Two 2½% (+) ANFC Taps and Four 2½%(-) BNFC Taps
- 4S	Two 2½% (+) ANFC Taps and Two 2½% (-) BNFC Taps
- 5S	Two 5% (+) ANFC Taps and Two 5% (-) BNFC Taps

If the catalog number has no suffix, there are no taps available.

#### EXAMPLE: T-2-53019-3S

The suffix 3S indicates the unit has two 2.5% (+) ANFC taps and four 2.5% (-) BNFC taps.

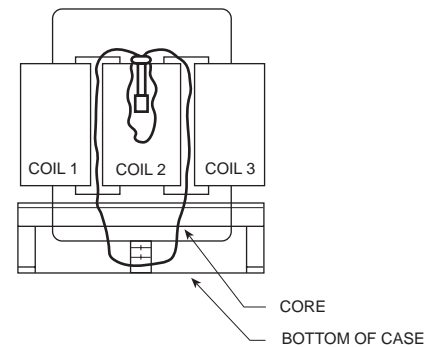
### Thermal Switch Kit

Acme Thermal Switch Kits are designed for use with single and three phase drive isolation and distribution transformers. Thermal switch kits are available for one or three sensor systems.

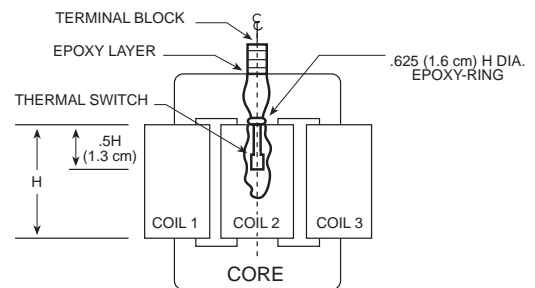
Thermal sensors can be field or factory installed in the transformer winding ducts to detect abnormal temperatures. The thermal sensors are a normally closed contact that opens at  $200^{\circ}\text{C} \pm 10^{\circ}\text{C}$  and has a current capacity of 5 amps @ 120V or 2.5 amps @ 240V. This contact can activate any number of different types of alarms or mechanisms that could warn of a potential failure.

**Catalog Number: PL-79900**

KVA	Mounting Position	Illustration
27.0 - 220.0	Bottom of the case	Figure 1
275.0 - 750	Top Flange of the Core Bracket	Figure 2



**Figure 1**



**Figure 2**

### Lug Kits

Acme's mechanical transformer lug kits contain all of the hardware necessary to provide satisfactory transformer terminations. Lug kits are available in sizes from 27 KVA to 660 KVA.

Acme lugs are of the dual rated single pole solderless type, made from high strength aluminum alloy. To provide the best in low contact resistance, all lugs in these kits are plated.

Catalog No.	Transformer KVA Size	Wire Range Al or Cu	Kit Contains		
			Qty	Nuts & Bolts	Qty
Lug 1	37½ 1-phase	2 - 14	8	¼ - 20 x ¾	8
	27 - 45 3-phase	250 mcm - 6	4		
Lug 2	50 - 75 1-phase	250 mcm - 6	12	¼ - 20 x ¾	8
	51 - 118 3-phase			¼ - 20 x 1¾	8
Lug 3	100 - 167 1-phase	250 mcm - 6	3	¼ - 20 x ¾	3
	145 - 300 3-phase	600 mcm - 2	22		
Lug 4	440 - 660 3-phase	600 mcm - 2	29	¾ - 16 x 2	8