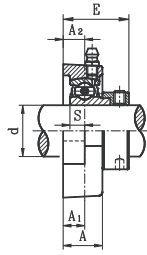
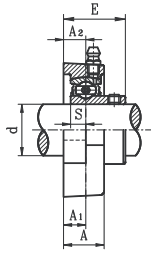
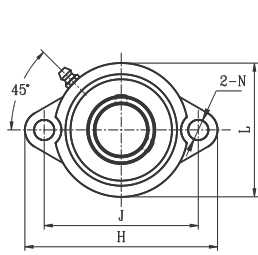


SBLF LIGHT DUTY SETSCREW LOCKING TYPE



- Cast iron housing
- Narrow inner ring bearing

Part No.	Shaft Dia. d		Dimension (in) (mm)									Bolt Size (in)	Bearing No.	Housing No.	Weight (lb)	
	(in)	(mm)	H	L	J	A ₂	A ₁	A	E	N	S					
IDC SBLF201-8G	1/2													SB201-8G		
IDC SBLF202-10G	5/8													202-10G		
IDC SBLF201-12MMG		12	3-3/16	2-13/64	2-1/2	3/8	45/64	3/8	5/16	15/64	1	1/4		201-12MMG	LF203	0.59
IDC SBLF202-15MMG		15	81	56	63.5	9.5	18	9.5	8	6.0	25.5			202-15MMG		
IDC SBLF203-17MMG		17												203-17MMG		
IDC SBLF203-11G	11/16													203-11G		
IDC SBLF204-12G	3/4		3-35/64	2-13/32	2-13/16	7/16	25/32	7/16	25/64	9/32	1-9/64	5/16		SB204-12G	LF204	0.72
IDC SBLF204-20MMG		20	90	61	71.5	11	20	11.0	10	7.0	29.0			204-20MMG		
IDC SBLF205-14G	7/8													SB205-14G		
IDC SBLF205-15G	15/16		3-47/64	2-33/64	2-63/64	7/16	25/32	7/16	25/64	19/64	1-13/64	5/16		205-15G	LF205	0.83
IDC SBLF205-25MMG		25	95	64	76	11	20	11.0	10	7.5	30.5			205-25MMG		
IDC SBLF205-16G	1													205-16G		
IDC SBLF206-18G	1-1/8													SB206-18G		
IDC SBLF206-19G	1-3/16		4-29/64	2-63/64	3-9/16	15/32	57/64	15/32	15/32	5/16	1-11/32	3/8		206-19G	LF206	1.23
IDC SBLF206-30MMG		30	113	76	90.5	12	22.5	12.0	12	8.0	34.0			206-30MMG		
IDC SBLF206-20G	1-1/4													206-20G		
IDC SBLF207-20G	1-1/4													SB207-20G		
IDC SBLF207-21G	1-5/16													207-21G		
IDC SBLF207-22G	1-3/8		4-51/64	3-1/2	3-15/16	1/2	15/16	33/64	15/32	21/64	1-7/16	3/8		207-22G	LF207	1.76
IDC SBLF207-35MMG		35	122	89	100	13	24	13.0	12	8.5	36.5			207-35MMG		
IDC SBLF207-23G	1-7/16													207-23G		

SALF LIGHT DUTY ECCENTRIC LOCKING COLLAR TYPE

Part No.	Shaft Dia. d		Dimension (in) (mm)									Bolt Size (in)	Bearing No.	Housing No.	Weight (lb)	
	(in)	(mm)	H	L	J	A ₂	A ₁	A	E	N	S					
IDC SALF201-8G	1/2													SA201-8G		
IDC SALF202-10G	5/8													202-10G		
IDC SALF201-12MMG		12	3-3/16	2-13/64	2-1/2	3/8	45/64	3/8	5/16	1/4	1-1/4	1/4		201-12MMG	LF203	0.66
IDC SALF202-15MMG		15	81	56	63.5	9.5	18	9.5	8	6.5	31.6			202-15MMG		
IDC SALF203-17MMG		17												203-17MMG		
IDC SALF203-11G	11/16													203-11G		
IDC SALF204-12G	3/4		3-35/64	2-13/32	2-13/16	7/16	25/32	7/16	25/64	19/64	1-23/64	5/16		SA204-12G	LF204	0.73
IDC SALF204-20MMG		20	90	61	71.5	11.0	20	11.0	10	7.5	34.4			204-20MMG		
IDC SALF205-14G	7/8													SA205-14G		
IDC SALF205-15G	15/16		3-47/64	2-33/64	2-63/64	7/16	25/32	7/16	25/64	19/64	1-23/64	5/16		205-15G	LF205	0.93
IDC SALF205-25MMG		25	95	64	76.0	11.0	20	11.0	10	7.5	34.4			205-25MMG		
IDC SALF205-16G	1													205-16G		
IDC SALF206-18G	1-1/8													SA206-18G		
IDC SALF206-19G	1-3/16		4-29/64	2-63/64	3-9/16	15/32	57/64	15/32	15/32	23/64	1-17/32	3/8		206-19G	LF206	1.32
IDC SALF206-30MMG		30	113	76	90.5	12.0	22.5	12.0	12	9.0	38.7			206-30MMG		
IDC SALF206-20G	1-1/4													206-20G		
IDC SALF207-20G	1-1/4													SA207-20G		
IDC SALF207-21G	1-5/16													207-21G		
IDC SALF207-22G	1-3/8		4-51/64	3-1/2	3-15/16	33/64	15/16	33/64	15/32	3/8	1-43/64	3/8		207-22G	LF207	1.87
IDC SALF207-35MMG		35	122	89	100.0	13.0	24	13.0	12	9.5	42.4			207-35MMG		
IDC SALF207-23G	1-7/16													207-23G		

Full cover metal shroud seal standard. Full contact rubber seal (2RS suffix) optional.
Non-relubricatable units also available (remove G suffix).