

GUEB Conduit Outlet Boxes with Multiple Hubs

Explosionproof, Dust-Ignitionproof, Raintight

Nec/CEC:

Class I, Division 1 and 2, Groups B♦, C, D
Class II, Division 1 and 2, Groups E, F, G
Class III

Applications

- To provide access to conductors for pulling, splicing, maintenance and future changes/ upgrades.
- Allows connection of straight conduit runs, branch conduit runs and 90° bends.

Features

- 7 to 13 hubs.
- O-Ring gasket provided to assure NEMA 4 rating.
- Smooth hub bushings protect insulation when pulling conductors.
- Cast-in brackets on cover for use with breaker-bar tools for tightening/loosening.
- Tapered threaded hubs (NPT)
- Supplied with close-up plugs (see table).
- Furnished with internal ground screw.

Standard Materials

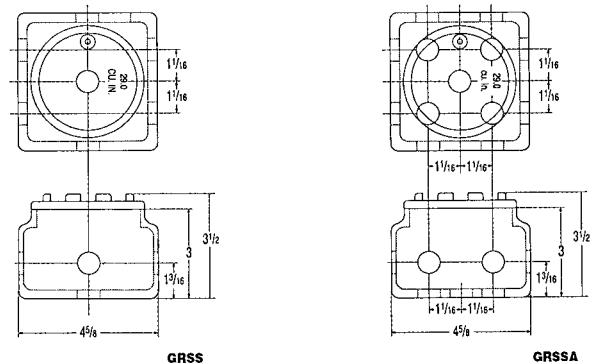
- Copper-free aluminum

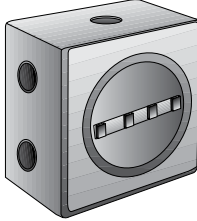
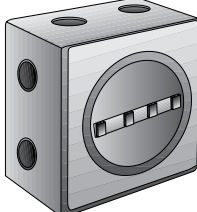
Standard Finishes

- Aluminum enamel

NEC/CEC Certifications and Compliances

- UL Standard: 886
- UL Listed: E-85310
- CSA Standard: C22.2 No. 30
- CSA Certified: 009795
- Fed. Spec: A-A-50563
- NEMA 4, 7BCD, 9EFG



Dimensions in Millimeters (Inches)						
	Trade Size (Inches)	No. of Hubs	No. of Plus Supplied	Cover Opening	Volume dm ³ (in ³)	Catalog Number
	1/2	7	4	85.852 (3.38)	.48 (29)	GUEB7-50AN4
	3/4	7	4	85.852 (3.38)	.48 (29)	GUEB7-75AN4
	1	7	4	85.852 (3.38)	.48 (29)	GUEB7-100AN4
	1/2	13	5	85.852 (3.38)	.48 (29)	GUEB13-50AN4
	3/4	13	5	85.852 (3.38)	.48 (29)	GUEB13-75AN4

♦ In Class I, Division 1, Group B atmospheres, all conduit runs must have a sealing fitting (not supplied) field-installed adjacent to the enclosure.