

BALDOR® • *RELIANCE*

Product Information Packet

FDL3514TM

1.5HP, 1725RPM, 1PH, 60HZ, 145T, 3532LC, TEFC

Part Detail							
Revision:	D	Status:	PRD/A	Change #:		Proprietary:	No
Type:	AC	Prod. Type:	3532LC	Elec. Spec:	35WGN451	CD Diagram:	CD0320
Enclosure:	TEFC	Mfg Plant:		Mech. Spec:	35E2351	Layout:	35LYE2351
Frame:	145T	Mounting:	F1	Poles:	04	Created Date:	12-17-2013
Base:	RG	Rotation:	R	Insulation:	B	Eff. Date:	09-10-2015
Leads:	4#16 A&J,2#18 B PH,1#14 #4TH					Replaced By:	
Literature:		Elec. Diagram:					

Nameplate NP1280L							
CAT.NO.	FDL3514TM						
SPEC.	35E2351N451G1						
HP	1.5						
VOLTS	115/208-230						
AMP	12.4/6.8-6.2						
RPM	1725						
FRAME	145T	HZ	60	PH	1		
SER.F.	1.00	CODE	J	DES	L	CL	B
NEMA-NOM-EFF	80	PF	96				
RATING	40C AMB-CONT						
CC		USABLE AT 208V					
DE	6205	ODE	6203				
ENCL	TEFC	SN					

AC Induction Motor Performance Data

Record # 38318 - Typical performance - not guaranteed values

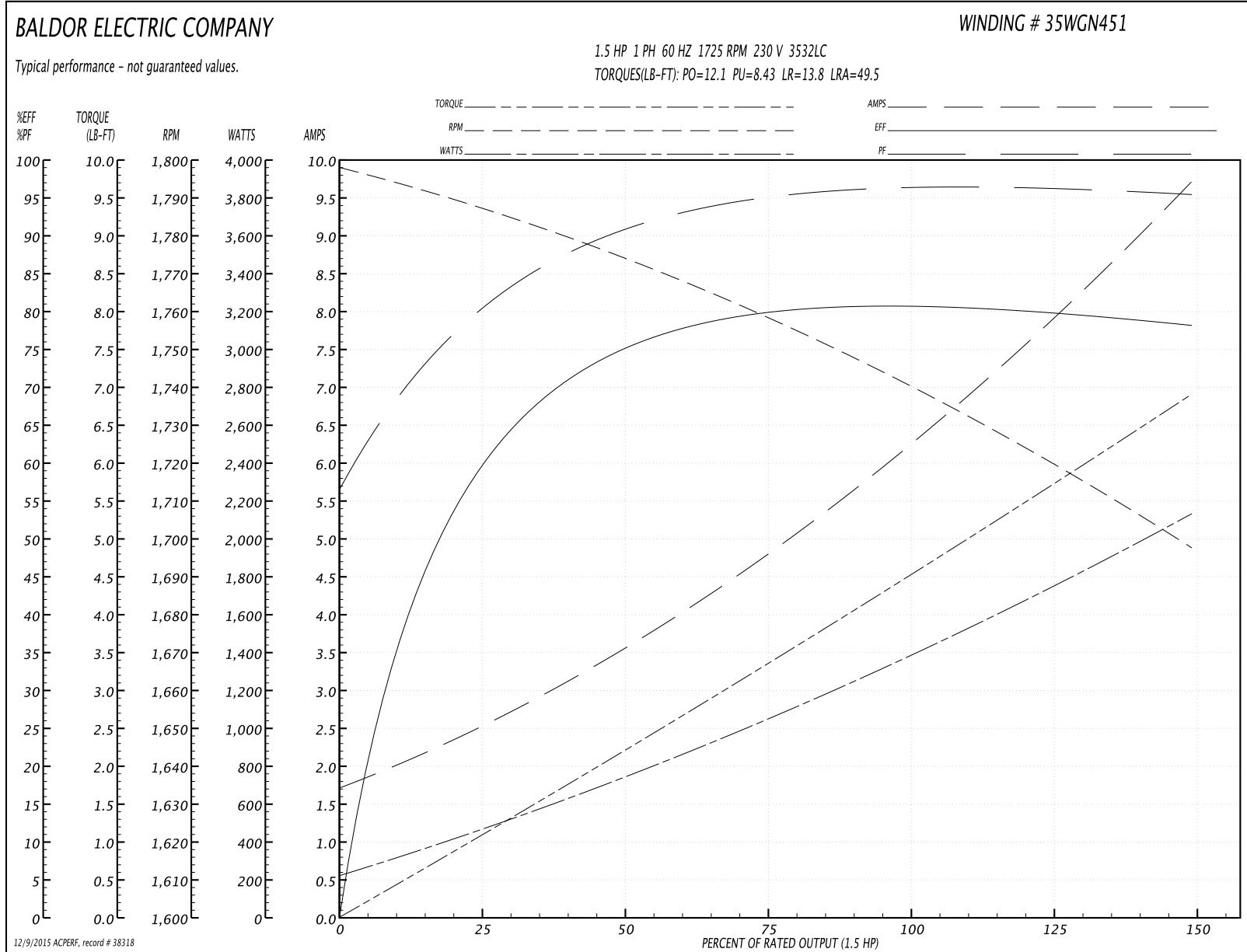
Winding: 35WGN451-R001	Type: 3532LC	Enclosure: TEFC
-------------------------------	---------------------	------------------------

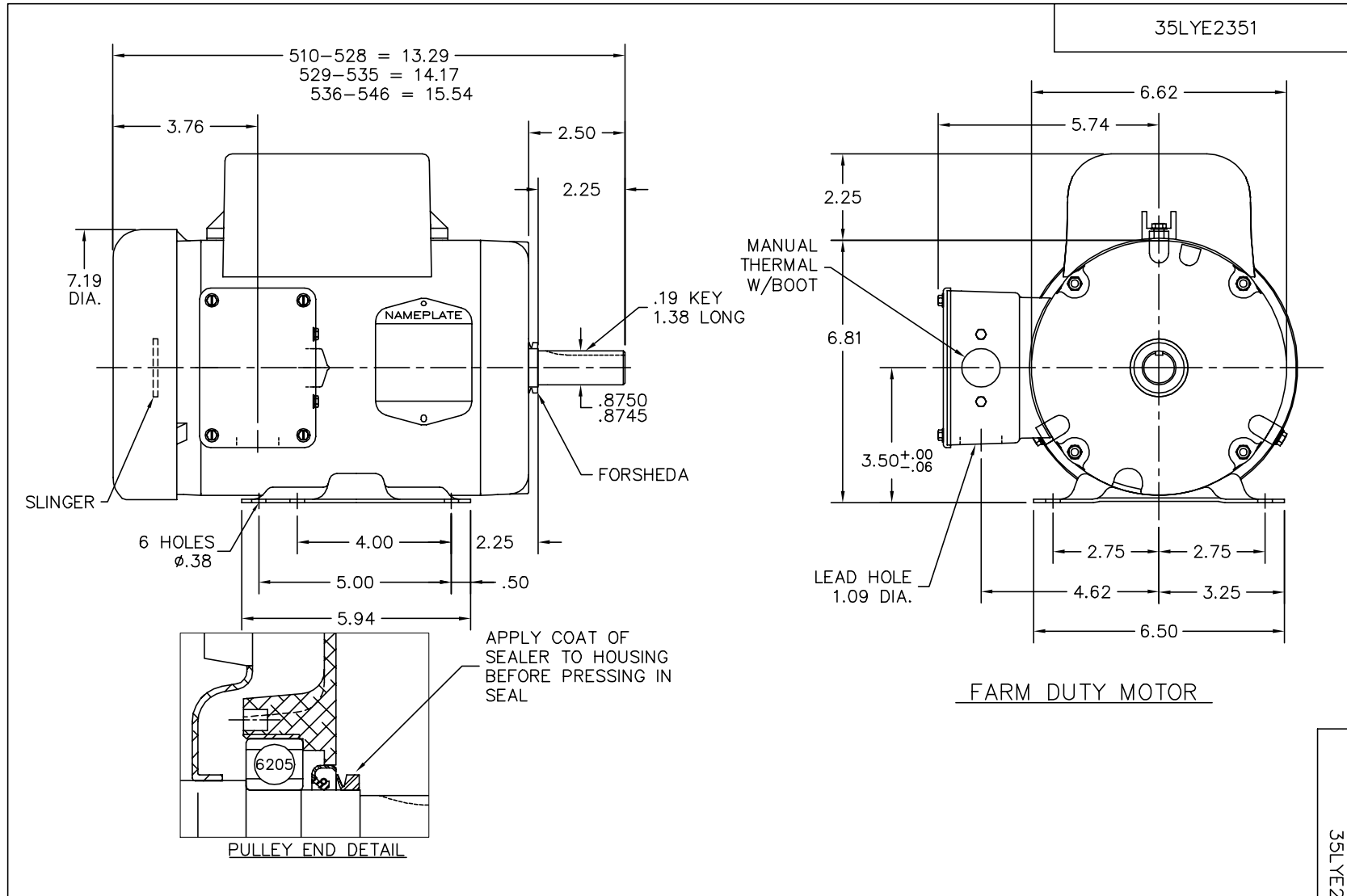
Nameplate Data				230 V, 60 Hz: High Voltage Connection	
Rated Output (HP)	1.5			Full Load Torque	4.48 LB-FT
Volts	115/208-230			Start Configuration	direct on line
Full Load Amps	12.4/6.8-6.2			Breakdown Torque	12.1 LB-FT
R.P.M.	1725			Pull-up Torque	8.43 LB-FT
Hz	60	Phase	1	Locked-rotor Torque	13.8 LB-FT
NEMA Design Code	L	KVA Code	J	Starting Current	49.5 A
Service Factor (S.F.)	1			No-load Current	1.76 A
NEMA Nom. Eff.	80	Power Factor	96	Line-line Res. @ 25°C	1.69 Ω A Ph 1.5344 Ω B Ph
Rating - Duty	40C AMB-CONT			Temp. Rise @ Rated Load	69°C

Load Characteristics 230 V, 60 Hz, 1.5 HP

% of Rated Load	25	50	75	100	125	150
Power Factor	83	91	95	96	96	96
Efficiency	58.3	74.3	79.3	81.2	80.3	77.8
Speed	1786.8	1773.6	1758.8	1742.3	1721.1	1696.6
Line amperes	2.41	3.53	4.78	6.21	7.86	9.72

Performance Graph at 230V, 60Hz, 1.5HP Typical performance - Not guaranteed values





CUSTOMER IS RESPONSIBLE FOR DETERMINING THAT BALDOR'S PRODUCT WILL PERFORM SUITABLY IN THE INTENDED APPLICATION.

REV. DESC: ADD FLAT SLINGER TO ODE		
REV. LTR: A	VERSION: 01	TDR: 000000909271
FILE: \AAA\00205\612	REVISED: 03:57:48 04/07/2015	BY: ENKANVO
MTL: -	⊙ ⊚	

BALDOR

HOR 143-5T TEFC LC,1" MTO KOBX,FARM DUTY,1.09 LH,SEAL PU END

SH 1 of 1

35LYE2351

