

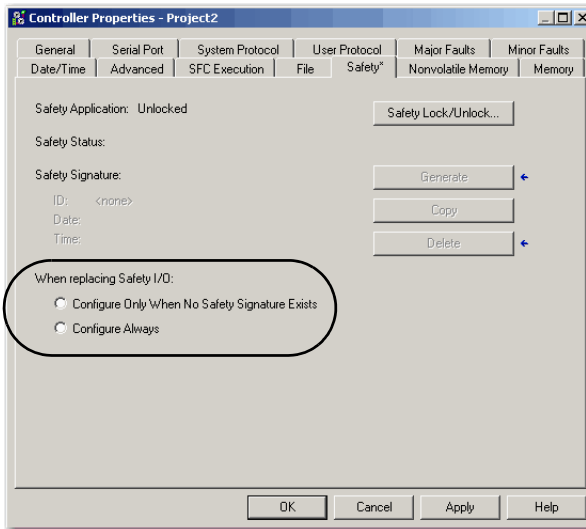
3. Click Reset.

Replacing a Module in a GuardLogix System on an EtherNet/IP Network

If you are relying on a portion of the CIP Safety system to maintain SIL 3 behavior during module replacement and functional testing, you must not use the Configure Always feature. Go to [Replacement with 'Configure Only When No Safety Signature Exists' Enabled on page 141](#).

If you are not relying on the entire routable CIP Safety control system to maintain SIL 3/PLe during the replacement and functional testing of a module, you can use the Configure Always feature. Go to [Replacement with 'Configure Always' Enabled on page 145](#).

Module replacement is configured on the Safety tab of the GuardLogix controller.



Replacement with 'Configure Only When No Safety Signature Exists' Enabled

When a module is replaced, the configuration will be downloaded from the safety controller if the DeviceID of the new module matches the original. The DeviceID is a combination of the node/IP address and the safety network number (SNN) and is updated whenever the SNN is set.

If the project is configured as 'Configure Only When No Safety Signature Exists', follow the appropriate instructions in [Table 11](#) to replace a POINT Guard I/O module based on your scenario. Once you have completed the steps in the scenario correctly, the DeviceID will match the original, enabling the safety

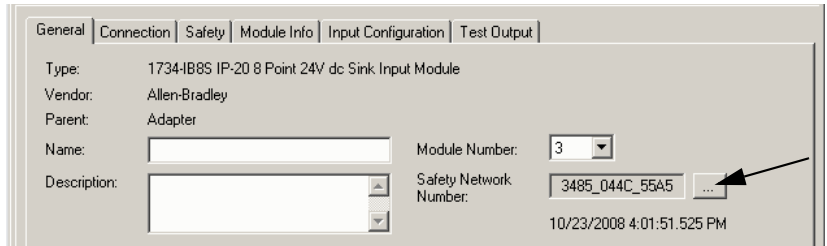
controller to download the proper module configuration, and re-establish the safety connection.

Table 11 - Replacing a Module

GuardLogix Safety Signature Exists	Replacement Module Condition	Action Required
No	No SNN (Out-of-box)	None. The module is ready for use.
Yes or No	Same SNN as original safety task configuration	None. The module is ready for use.
Yes	No SNN (Out-of-box)	See Scenario 1 - Replacement Module Is Out-of-box and Safety Signature Exists on page 142.
Yes	Different SNN from original safety task configuration	See Scenario 2 - Replacement Module SNN Is Different from Original and Safety Signature Exists on page 143.
No	Different SNN from original safety task configuration	See Scenario 3 - Replacement Module SNN Is Different from Original and No Safety Signature Exists on page 144.

Scenario 1 - Replacement Module Is Out-of-box and Safety Signature Exists

1. Remove the old I/O module and install the new module.
2. Right-click the replacement POINT Guard I/O module and choose Properties.
3. Click ... to the right of the safety network number to open the Safety Network Number dialog box.



4. Click Set.

