

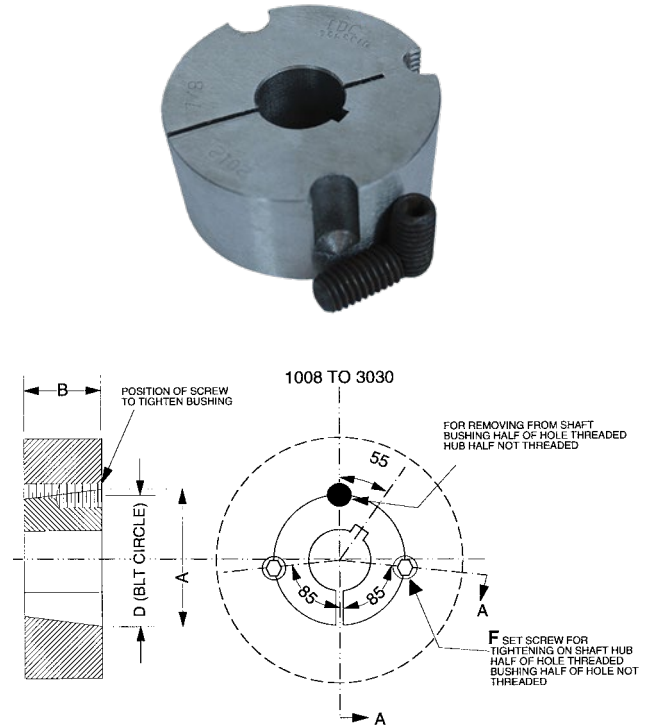
IDC SELECT® SHEAVES & BUSHINGS

BUSHINGS

TAPER-LOCK® BUSHINGS

BUSHINGS

Bush No.	Bore Range (in)	Keyseat (in)
1008	1/2, 9/16 5/8, 11/16, 3/4, 13/16, 7/8 15/16, 1	1/8 X 1/16 3/16 X 3/32 1/4 X 1/16*
1108	1/2, 9/16 5/8, 11/16, 3/4, 13/16, 7/8 15/16, 1 1 1/16, 1 1/8	1/8 X 1/16 3/16 X 3/32 1/4 X 1/8 1/4 X 1/16*
1210	1/2, 9/16	1/8 X 1/16
1215	5/8, 11/16, 3/4, 13/16, 7/8 15/16, 1, 1 1/16, 1 1/8, 1 3/16, 1 1/4	3/16 X 3/32 1/4 X 1/8
1310	1/2, 9/16 5/8, 11/16, 3/4, 13/16, 7/8 15/16, 1, 1 1/16, 1 1/8, 1 3/16, 1 1/4 1 5/16, 1 3/8	1/8 X 1/16 3/16 X 3/32 1/4 X 1/8 5/16 X 5/32
1610	1/2, 9/16	1/8 X 1/16
1615	5/8, 11/16, 3/4, 13/16, 7/8 15/16, 1, 1 1/16, 1 1/8, 1 3/16, 1 1/4 1 5/16, 1 3/8 1 7/16, 1 1/2 1 9/16, 1 5/8	1/8 X 1/16 3/16 X 3/32 1/4 X 1/8 5/16 X 5/32 3/8 X 3/16 3/8 X 1/8*
2012	1/2, 9/16 5/8, 11/16, 3/4, 13/16, 7/8 15/16, 1, 1 1/16, 1 1/8, 1 3/16, 1 1/4 1 5/16, 1 3/8 1 7/16, 1 1/2, 1 9/16, 1 3/8, 1 11/16, 1 3/4 1 13/16, 1 7/8 1 15/16, 2 1 15/16, 2	1/8 X 1/16 3/16 X 3/32 1/4 X 1/8 5/16 X 5/32 3/8 X 3/16 1/2 X 1/4 1/2 X 3/16*
2517	1/2, 9/16 5/8, 11/16, 3/4, 13/16, 7/8 15/16, 1 1/16, 1 1/8, 1 3/16, 1 1/4 1 5/16, 1 3/8 1 7/16, 1 1/2, 1 9/16, 1 3/8, 1 11/16, 1 3/4 1 13/16, 1 7/8, 1 15/16, 2, 2 1/16, 2 1/8, 2 3/16, 2 1/4 2 5/16, 2 3/8, 2 7/16, 2 1/2	1/8 X 1/16 3/16 X 3/32 1/4 X 1/8 5/16 X 5/32 3/8 X 3/16 1/2 X 1/4 5/8 X 3/16*
2525	3/4, 13/16 7/8, 15/16, 1, 1 1/8, 1 3/16, 1 1/4 1 5/16, 1 3/8 1 7/16, 1 1/2, 1 9/16, 1 3/8, 1 11/16, 1 3/4 1 13/16, 1 7/8, 1 15/16, 2, 2 1/8, 2 3/16, 2 1/4 2 5/16, 2 3/8, 2 7/16, 2 1/2	3/16 X 3/32 1/4 X 1/8 5/16 X 5/32 3/8 X 3/16 1/2 X 1/4 5/8 X 3/16*
3020	15/16, 1, 1 1/8, 1 3/16, 1 1/4 1 5/16, 1 3/8 1 7/16, 1 1/2, 1 9/16, 1 3/8, 1 11/16, 1 3/4 1 13/16, 1 7/8, 1 15/16, 2, 2 1/16, 2 1/8, 2 3/16, 2 1/4 2 5/16, 2 3/8, 2 7/16, 2 1/2, 2 5/8, 2 11/16, 2 3/4 2 7/8, 2 15/16, 3	1/4 X 1/8 5/16 X 5/32 3/8 X 3/16 1/2 X 1/4 5/8 X 5/16 3/4 X 1/4*
3030	15/16, 1, 1 1/8, 1 3/16, 1 1/4 1 5/16, 1 3/8 1 7/16, 1 1/2, 1 9/16, 1 3/8, 1 11/16, 1 3/4 1 13/16, 1 7/8, 1 15/16, 2, 2 1/16, 2 1/8, 2 3/16, 2 1/4 2 5/16, 2 3/8, 2 7/16, 2 1/2, 2 5/8, 2 11/16, 2 3/4 2 7/8, 2 15/16, 3	1/4 X 1/8 5/16 X 5/32 3/8 X 3/16 1/2 X 1/4 5/8 X 5/16 3/4 X 1/4*



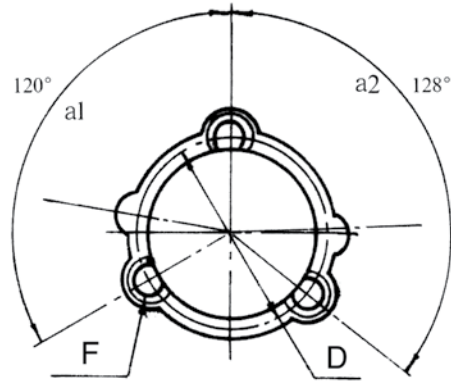
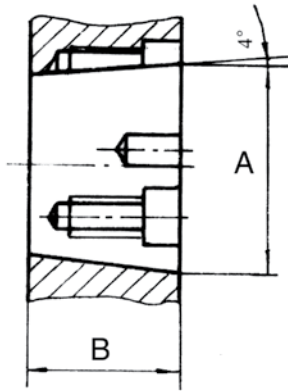
TB	A	B	D	F	Wt. (lb)
1008	1 25/64	7/8	1 21/64	1/4	0.27
1108	1 1/2	7/8	1 29/64	1/4	0.33
1210	1 7/8	1	1 3/4	3/8	0.61
1215	1 7/8	1 1/2	1 3/4	3/8	0.80
1610	2 1/4	1	2 1/8	3/8	0.90
1615	2 1/4	1 1/2	2 1/8	3/8	1.20
2012	2 3/4	1 1/4	2 5/8	7/16	1.70
2517	3 3/8	1 3/4	3 1/4	1/2	3.50
2525	3 3/8	2 1/2	3 1/4	1/2	4.90
3020	4 1/4	2	4	5/8	6.50
3030	4 1/4	3	5/8	4	9.20

*Shallow keyseat - keystock supplies included with bushing

IDC SELECT® SHEAVES & BUSHINGS

BUSHINGS

TAPER-LOCK® BUSHINGS



Bush No.	Bore Range (in)	Keyseat (in)	
3535	1 ³ / ₁₆ , 1 ¹ / ₄	1/4 X 1/8	
	1 ⁵ / ₁₆ , 1 ³ / ₈	5/16 X 5/32	
	1 ⁷ / ₁₆ , 1 ¹ / ₂ , 1 ⁵ / ₈ , 1 ¹¹ / ₁₆ , 1 ³ / ₄ , 1 ¹³ / ₁₆	3/8 X 3/16	
	1 ⁷ / ₈ , 1 ¹⁵ / ₁₆ , 2, 2 ¹ / ₈ , 2 ³ / ₁₆ , 2 ¹ / ₄	1/2 X 1/4	
	2 ⁵ / ₁₆ , 2 ³ / ₈ , 2 ⁷ / ₁₆ , 2 ¹ / ₂ , 2 ⁵ / ₈ , 2 ¹¹ / ₁₆ , 2 ³ / ₄	5/8 X 5/16	
	2 ¹³ / ₁₆ , 2 ⁷ / ₈ , 2 ¹⁵ / ₁₆ , 3, 3 ¹ / ₈ , 3 ³ / ₁₆ , 3 ¹ / ₄	3/4 X 3/8	
	3 ⁵ / ₁₆ , 3 ³ / ₈ , 3 ⁷ / ₁₆ , 3 ¹ / ₂	7/8 X 1/4*	
	4040	1 ⁷ / ₁₆ , 1 ¹ / ₂ , 1 ⁵ / ₈ , 1 ¹¹ / ₁₆ , 1 ³ / ₄	3/8 X 3/16
		1 ¹³ / ₁₆ , 1 ⁷ / ₈ , 1 ¹⁵ / ₁₆ , 2, 2 ¹ / ₈ , 2 ³ / ₁₆ , 2 ¹ / ₄	1/2 X 1/4
		2 ⁵ / ₁₆ , 2 ³ / ₈ , 2 ⁷ / ₁₆ , 2 ¹ / ₂ , 2 ⁵ / ₈ , 2 ¹¹ / ₁₆ , 2 ³ / ₄	5/8 X 5/16
2 ¹³ / ₁₆ , 2 ⁷ / ₈ , 2 ¹⁵ / ₁₆ , 3, 3 ¹ / ₈ , 3 ³ / ₁₆ , 3 ¹ / ₄		3/4 X 3/8	
3 ⁵ / ₁₆ , 3 ³ / ₈ , 3 ⁷ / ₁₆ , 3 ¹ / ₂ , 3 ⁵ / ₈		7/8 X 7/16	
3 ¹¹ / ₁₆ , 3 ³ / ₄		7/8 X 1/4	
3 ¹³ / ₁₆ , 3 ⁷ / ₈ , 3 ¹⁵ / ₁₆ , 4		1 X 1/4*	
4545		2 ⁵ / ₁₆ , 2 ³ / ₈ , 2 ⁷ / ₁₆ , 2 ¹ / ₂ , 2 ⁵ / ₈ , 2 ³ / ₄	5/8 X 5/16
		2 ¹³ / ₁₆ , 2 ⁷ / ₈ , 2 ¹⁵ / ₁₆ , 3, 3 ¹ / ₈ , 3 ³ / ₁₆ , 3 ¹ / ₄	3/4 X 3/8
		3 ⁵ / ₁₆ , 3 ³ / ₈ , 3 ⁷ / ₁₆ , 3 ¹ / ₂ , 3 ⁵ / ₈ , 3 ³ / ₄	7/8 X 7/16
	3 ¹³ / ₁₆ , 3 ⁷ / ₈ , 3 ¹⁵ / ₁₆ , 4, 4 ¹ / ₈ , 4 ³ / ₁₆ , 4 ¹ / ₄	1 X 1/2	
	4 ⁵ / ₁₆ , 4 ³ / ₈ , 4 ⁷ / ₁₆ , 4 ¹ / ₂	1 X 1/4*	
	5050	2 ⁷ / ₁₆	5/8 X 5/16
2 ¹⁵ / ₁₆		3/4 X 3/8	
3 ³ / ₈ , 3 ⁷ / ₁₆ , 3 ⁵ / ₈		7/8 X 7/16	
3 ⁷ / ₈ , 3 ¹⁵ / ₁₆ , 4, 4 ¹ / ₄ , 4 ³ / ₈ , 4 ⁷ / ₁₆ , 4 ¹ / ₂		1 X 1/2	
4 ⁷ / ₈ , 4 ¹⁵ / ₁₆ , 5		1 ¹ / ₄ X 7/16*	

*Shallow keyseat - keystock supplies included with bushing



TB	A	B	D	F	Wt. (lb)
3535	5	3 ¹ / ₂	4 ⁷ / ₈	1/2	14.00
4040	5 ³ / ₄	4	5 ¹ / ₂	5/8	22.00
4545	6 ³ / ₈	4 ¹ / ₂	6 ¹ / ₈	3/4	30.00
5050	7	5	6 ³ / ₄	7/8	38.00

BUSHINGS

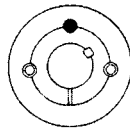
IDC SELECT® SHEAVES & BUSHINGS

BUSHINGS

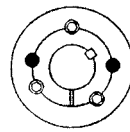
TAPER-LOCK® BUSHINGS

BUSHINGS

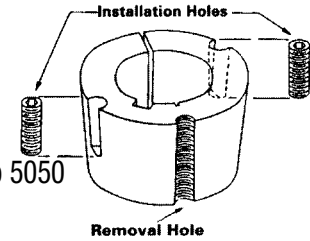
Bushing	Bore Range (mm)	Keyseat (mm)
1008	14, 16	5 x 2.3
	18, 19, 20, 22	6 x 2.8
	24, 25	8 x 2.0
1108	14, 16	5 x 2.3
	18, 19, 20, 22	6 x 2.8
	24, 25	8 x 3.3
	28	8 x 2.0
1210	14, 16	5 x 2.3
	18, 19, 20, 22	6 x 2.8
	24, 25, 28, 30	8 x 3.3
	32	10 x 3.3
1215	14, 16	5 x 2.3
	18, 19, 20, 22	6 x 2.8
	24, 25, 28, 30	8 x 3.3
	32	10 x 3.3
1310	14, 16	5 x 2.3
	18, 19, 20, 22	6 x 2.8
	24, 25, 28, 30	8 x 3.3
	32, 35	10 x 3.3
1610	14, 16	5 x 2.3
	18, 19, 20, 22	6 x 2.8
	24, 25, 28, 30	8 x 3.3
	32, 35, 38 40, 42	10 x 3.3 12 x 3.3
1615	14, 16	5 x 2.3
	18, 19, 20, 22	6 x 2.8
	24, 25, 28, 30	8 x 3.3
	32, 35, 38 40, 42	10 x 3.3 12 x 3.3
2012	18, 19, 20, 22	6 x 2.8
	24, 25, 28, 30	8 x 3.3
	32, 35, 38	10 x 3.3
	40, 42, 45, 48, 50	12 x 3.3
2517	20, 22	6 x 2.8
	24, 25, 28, 30	8 x 3.3
	32, 35, 38	10 x 3.3
	40, 42, 45, 48, 50 55, 60	10 x 3.3 16 x 4.3
3020 and 3030	25, 28, 30	8 x 3.3
	32, 35, 38	10 x 3.3
	40, 42	12 x 3.3
	45, 48, 50	14 x 3.8
	55	16 x 4.3
	60, 65 70, 75	18 x 4.4 20 x 4.9
3535	35, 38	10 x 3.3
	40, 42	12 x 3.3
	45, 48, 50	14 x 3.8
	55	16 x 4.3
	60, 65	18 x 4.4
	70, 75 80, 85, 90	20 x 4.9 22 x 5.4
4545	55	16 x 4.3
	60, 65	18 x 4.4
	70, 75	20 x 4.9
	80, 85	22 x 5.4
	90, 95	25 x 5.4
	100, 105, 110	28 x 6.4
5050	60, 65	18 x 4.4
	70, 75	20 x 4.9
	80, 85	22 x 5.4
	90, 95	25 x 5.4
	100, 105, 110	28 x 6.4
	115, 120, 125	32 x 7.4



1008 to 3030



3525 to 5050



INSTALLATION

1. Properly clean shaft, bore, and taper surface of bushing. Remove or degrease any oil, paint, or dirt.
2. Install the bushing into the pulley hub. Be sure to match the hole pattern, not the threaded holes. Match the half threaded holes with the half straight holes (a complete hole will be threaded on one side only).
3. Lightly oil the set screws (1008 to 3030) or the cap screws (3525 to 5050) and be sure to oil under the cap screw head. Install the screws into the holes that are threaded on the hub side (shown as in diagram). DO NOT LUBRICATE THE BUSHING TAPER OR BORE. BREAKAGE OF PRODUCT MAY OCCUR.
4. Fit the pulley with the bushing onto the shaft and locate in the proper location. Install key into the keyway of the shaft and bushing.
5. Tighten screws alternately and gradually in accordance with the torques listed on the Recommended Wrench Torque chart.
6. Using a hammer with a block or sleeve (do not hit bushing directly with hammer) tap on large end of the bushing and re-tighten screws per the appropriate wrench torque values.
7. Fill screw heads with grease to eliminate dirt build up.

REMOVAL

1. Remove all screws and lightly oil the point and threads. Oil under cap screws if used.
2. Install screws into the holes that are threaded only on the bushing side (shown as in diagram).
3. Tighten screws uniformly and alternately until the bushing is loose from in the hub and pulley is free from the shaft. Tap on small end of bushing to assist removal if it does not loosen. Note: one screw is not used for removal.

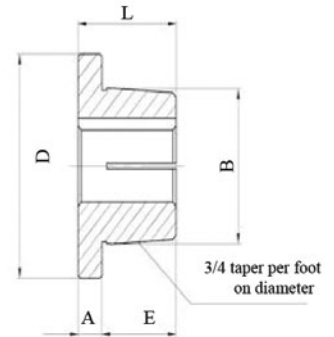
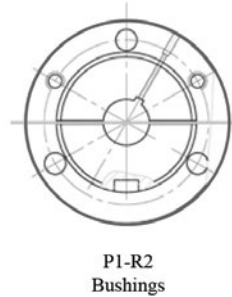
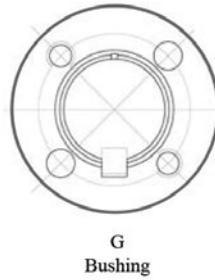
Recommended Wrench Torque				
Bushing #	Lb-In	Nm ²	Set Screw Hex Size	Set Screw Size (UNC)
1008, 1108	53	6	3mm	1/4-20UNC
1210, 1215	176	20	5mm	3/8-16UNC
1310	176	20	5mm	3/8-16UNC
1610, 1615	176	20	5mm	3/8-16UNC
2012	273	31	5mm	7/16-14UNC
2517, 2525	422	48	1/4	1/2-13UNC
3020, 3030	790	90	8mm	5/8-11UNC
3535	986	112	3/8	1/2-13UNC
4040	1,670	190	12mm	5/8-11UNC
4545	2,380	270	14mm	3/4-10UNC
5050	3,080	350	14mm	7/8-9UNC

Note: Unlike the English System, the Metric System does not refer to the keyseat or keyway dimensions. Dimensions are given for the key itself which is rectangular, not square as in the English System. Ordering Example: (1008-14MM) or (4545-105MM).

IDC SELECT® SHEAVES & BUSHINGS

BUSHINGS

DOUBLE SPLIT TAPER BUSHINGS



BUSHINGS

Bushing	Double Split Taper Bushings - Dimensions (in)					Bolt Circle Diameter	Cap Screws GRADE 5		Average Weight (lb)
	A	B	D	E	L		Qty	Size	
G	1/4	1.172	2	3/4	1	19/16	2	1/4 x 5/8	0.50
P1	13/32	1 15/16	3	1 17/32	1 15/16	27/16	3	5/16 x 1	1.30
P2	13/32	1 15/16	3	2 17/32	2 15/16	27/16	3	5/16 x 1	1.50
B	1/2	2 5/8	3 11/16	1 7/16	1 15/16	3 1/8	3	5/16 x 1 1/4	1.80
Q1	17/32	2 7/8	4 1/8	1 31/32	2 1/2	3 3/8	3	3/8 x 1 1/4	3.50
Q2	17/32	2 7/8	4 1/8	2 31/32	3 1/2	3 3/8	3	3/8 x 1 1/4	4.50
R1	5/8	4	5 3/8	2 1/4	2 7/8	4 5/8	3	3/8 x 1 3/4	7.50
R2	5/8	4	5 3/8	4 1/4	4 7/8	4 5/8	3	3/8 x 1 3/4	11.00

Bushing	Bore Range (in)	Wt.	Key Seat (in)
G	3/8, 7/16, 3/4	0.40	NONE
	1/2, 9/16	0.40	1/8 x 1/16
	1/2, 9/16	0.40	1/8 x 1/16
	5/8, 1 1/16, 3/4, 13/16, 7/8	0.40	3/16 x 3/32
	15/16*, 1*	0.40	1/4 x 1/16*
P1	1/2, 9/16	1.70	1/8 x 1/16
	5/8, 1 1/16, 3/4, 2 1/32, 25/32, 13/16, 7/8	1.70	3/16 x 3/32
	15/16, 3 1/32, 1, 1 1/16, 1 1/8, 13/16, 1 1/4, 1 3/8	1.70	5/16 x 5/32
	1 1/16, 1 3/4, 1 7/16	1.70	1 3/8 x 3/16
P2	3/4, 13/16, 7/8	2.18	3/16 x 3/32
	15/16, 1, 1 1/16, 1 1/8, 13/16, 1 1/4	2.18	1/4 x 1/8
	15/16, 1 3/8	2.18	5/16 x 5/32
	1 7/16*, 1 1/2, 1 9/16, 1 5/8, 1 11/16, 3/4	2.18	3/8 x 3/16
Q1	3/4, 13/16, 7/8	4.60	3/16 x 3/32
	15/16, 1, 1 1/16, 1 1/8, 13/16, 1 1/4	4.60	1/4 x 1/8
	15/16, 1 3/8	4.60	5/16 x 5/32
	1 7/16, 1 1/2, 1 9/16, 1 5/8, 1 11/16, 1 3/4	4.60	3/8 x 3/16
	1 13/16, 1 7/8, 1 15/16, 2, 2 1/16, 2 1/8, 2 3/16, 2 1/4	4.60	1/2 x 1/4
	2 5/16, 2 3/8, 2 7/8, 2 1/2, 2 9/16, 2 5/8, 2 11/16	4.60	5/8 x 5/16
		4.60	5/8 x 5/16

Bushing	Bore Range (in)	Wt.	Key Seat (in)
Q2	1, 1 1/16, 1 1/8, 1 3/16, 1 1/4	5.80	1/4 x 1/8
	15/16, 1	5.80	5/16 x 3/32
	1 3/8, 1 7/16, 1 1/2, 1 9/16, 1 5/8, 1 11/16, 1 3/4	5.80	3/8 x 3/16
	1 13/16, 1 7/8, 1 15/16, 2, 2 1/16, 2 1/8, 2 3/16, 2 1/4	5.80	1/2 x 1/4
	2 5/16, 2 3/8, 2 7/16, 2 1/2, 2 9/16, 2 5/8	5.80	5/8 x 5/16
R1	1 1/16	9.95	3/16 x 3/32
	1 1/8, 1 3/16, 1 1/4, 1 5/16, 1 3/8, 1 7/16	9.95	1/4 x 1/8
	1 1/2, 1 9/16, 1 5/8, 1 11/16, 1 3/4	9.95	3/8 x 3/16
	1 13/16, 1 7/8, 1 15/16, 2 1/16, 2 1/8, 2 3/16, 2 1/4	9.95	1/2 x 1/4
	2 5/16, 2 3/8, 2 7/16, 2 1/2, 2 9/16, 2 5/8, 2 11/16, 2 3/4	9.95	5/8 x 5/16
R2	2 13/16, 2 7/8, 2 15/16, 3, 3 1/8, 3 3/16, 3 1/4	9.95	3/4 x 3/8
	3 3/8, 3 7/16, 3 1/2, 3 5/8, 3 3/4	9.95	7/8 x 7/16
	1 1/16	14.38	3/16 x 3/32
	1 3/8, 1 7/16, 1 1/2, 1 9/16, 1 5/8, 1 11/16, 1 3/4	14.38	3/8 x 3/16
	1 13/16, 1 7/8, 1 15/16, 2 1/16, 2 1/8, 2 3/16, 2 1/4, 2 5/16	14.38	1/2 x 1/4
R2	2 3/8, 2 7/16, 2 1/2, 2 9/16, 2 5/8, 2 11/16, 2 3/4	14.38	5/8 x 5/16
	2 13/16, 2 7/8, 2 15/16, 3, 3 1/8, 3 3/16, 3 1/4	14.38	3/4 x 3/8
	3 3/8, 3 7/16, 3 1/2, 3 5/8, 3 3/4, 3 3/8	14.38	7/8 x 7/16
	3 1/16, 3 1/2, 3 5/8	14.38	7/8 x 7/16
		14.38	7/8 x 7/16

*Shallow keyseat - keystock supplied with bushing

A rectangular key is supplied with bushings that have shallow keyseats. This key will fit the standard depth keyseat on the shaft and the shallow keyseat on the bushing.