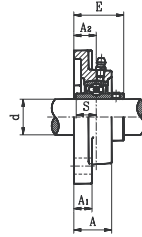
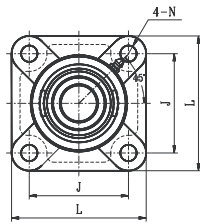


UCF STANDARD DUTY SETSCREW LOCKING TYPE



- Cast iron housing
- Wide inner ring bearing

Part No.	Shaft Dia. d		Dimension (in) (mm)								Bolt Size (in)	Bearing No.	Housing No.	Weight (lb)	
	(in)	(mm)	L	J	A ₂	A ₁	A	E	N	S					
IDC UCF201S	1/2	12											UC201S		
IDC UCF201-8S													201-8S		
IDC UCF202S	5/8	15	2-63/64	2-1/8	19/32	7/16	31/32	1-7/32	7/16	7/16	3/8		202S	F203	1.14
IDC UCF202-10S			76	54	15	11	24.6	31	11	11.2			202-10S		
IDC UCF203S		17											203S		
IDC UCF203-11S	11/16												203-11S		
IDC UCF201-8	1/2	12											UC201-8		
IDC UCF201-12MM		15											201-12MM		
IDC UCS202-15MM	5/8	17	3-3/8	2-33/64	19/32	15/32	1	1-5/16	15/32	1/2	3/8		202-10	F204	1.32
IDC UCS202-10			86	64	15	12	25.5	33.3	12	12.7			203-17MM		
IDC UCF203-17MM	11/16												203-11		
IDC UCF203-11		20											204-20MM		
IDC UCF204-20MM	3/4												204-12		
IDC UCF204-12	7/8												UC205-14		
IDC UCF205-14	15/16	25	3-3/4	2-3/4	5/8	35/64	1-1/16	1-13/32	15/32	9/16	3/8		205-15	F205	1.83
IDC UCF205-15			95	70	16	14	27	35.8	12	14.3			205-25MM		
IDC UCF205-25MM	1												205-16		
IDC UCF205-16	1-1/8												UC206-18		
IDC UCF206-18	1-3/16	30	4-1/4	3-17/64	45/64	35/64	1-7/32	1-37/64	15/32	5/8	3/8		206-19	F206	2.51
IDC UCF206-19			108	83	18	14	31	40.2	12	15.9			206-30MM		
IDC UCF206-30MM	1-1/4												206-20		
IDC UCF206-20	1-1/4												UC207-20		
IDC UCF207-20	1-5/16	35	4-39/64	3-5/8	3/4	5/8	1-11/32	1-3/4	35/64	11/16	7/16		207-21	F207	3.35
IDC UCF207-21	1-3/8		117	92	19	16	34	44.4	14	17.5			207-22		
IDC UCF207-22													207-35MM		
IDC UCF207-35MM	1-7/16												207-23		
IDC UCF207-23	1-1/2												UC208-24		
IDC UCF208-24	1-9/16	40	5-1/8	4-1/64	53/64	5/8	1-27/64	2-1/64	5/8	3/4	1/2		208-25	F208	4.14
IDC UCF208-25			130	102	21	16	36	51.2	16	19			208-40MM		
IDC UCF208-40MM	1-5/8												UC209-26		
IDC UCF209-26	1-11/16	45	5-25/64	4-9/64	55/64	45/64	1-1/2	2-1/16	5/8	3/4	1/2		209-27	F209	4.96
IDC UCF209-27	1-3/4		137	105	22	18	38	52.2	16	19			209-28		
IDC UCF209-28													209-45MM		
IDC UCF209-45MM	1-7/8	50	5-5/8	4-3/8	55/64	45/64	1-37/64	2-5/32	5/8	3/4	1/2		UC210-30		
IDC UCF210-30	1-15/16		143	111	22	18	40	54.6	16	19			210-31	F210	5.54
IDC UCF210-31													210-50MM		
IDC UCF210-50MM	2	55	6-3/8	5-1/8	63/64	25/32	1-11/16	2-19/64	3/4	7/8	5/8		UC211-32		
IDC UCF211-32	2-1/8		162	130	25	20	43	58.4	19	22.2			211-34	F211	7.63
IDC UCF211-34													211-55MM		
IDC UCF211-55MM	2-3/16												211-35		
IDC UCF211-35	2-1/4	60	6-57/64	5-5/8	1-9/64	25/32	1-57/64	2-45/64	3/4	1	5/8		UC212-36		
IDC UCF212-36	2-3/8		175	143	29	20	48	68.7	19	25.4			212-38	F212	9.72
IDC UCF212-38													212-60MM		
IDC UCF212-60MM	2-7/16												212-39		
IDC UCF212-39	2-1/2	65	7-23/64	5-55/64	1-3/16	55/64	1-31/32	2-3/4	3/4	1	5/8		UC213-40		
IDC UCF213-40			187	149	30	22	50	69.7	19	25.4			213-65MM	F213	11.2
IDC UCF213-65MM	2-3/4	70	7-19/32	5-63/64	1-7/32	55/64	2-1/8	2-31/32	3/4	1-3/16	5/8		UC214-44		
IDC UCF214-44			193	152	31	22	54	75.4	19	30.2			214-70MM	F214	12.92
IDC UCF214-70MM	2-15/16	75	7-7/8	6-17/64	1-11/32	55/64	2-13/64	3-3/32	3/4	1-5/16	5/8		UC215-47		
IDC UCF215-47	3		200	159	34	22	56	78.5	19	33.3			215-48	F215	15.3
IDC UCF215-48													215-75MM		
IDC UCF215-75MM	80		8-3/16	6-1/2	1-11/32	55/64	2-9/32	3-9/32	29/32	1-5/16	3/4		UC216-80MM		
IDC UCF216-80MM			208	165	34	22	58	83.3	23	33.3			216-80MM	F216	16.53
IDC UCF217-52	3-1/4	85	8-21/23	6-57/64	1-27/64	15/16	2-31/64	3-29/64	29/32	1-11/32	3/4		UC217-52		
IDC UCF217-85MM			220	175	36	24	63	87.6	23	34.1			217-85MM	F217	21.78
IDC UCF218-56	3-1/2	90	9-1/4	7-23/64	1-37/64	15/16	2-43/64	3-51/64	29/32	1-9/16	3/4		UC218-56		
IDC UCF218-90MM			235	187	40	24	68	96.3	23	39.7			218-90MM	F218	26.83

Dual seal standard. Triple lip seal (R3 suffix) optional.