

# Cable Supports

For Rigid Conduit, IMC<sup>†</sup> & EMT with pOZi-grip® "S-style" Wedging Plug

## Type S

For TWO or more wires - Indoors -  
at voltages to 600V.

### Use:

For supporting non-armored electrical cables in vertical conduit risers.

### Features:

- Threaded for Rigid Conduit and IMC.
- For threadless conduit or EMT, see note below.
- Use with all types of insulations at voltages to and including 600V.
- The fastest and easiest type cable support to install.
- The knurled insulating inner surface and one piece impregnated hardwood pOZi-grip plug provide positive support well in excess of code requirements.
- "Body Only" can be ordered separately, for installation prior to wire pulling. "Plug Only" can be ordered later, once wires are in place.

**NOTE: Plugs will not be supplied undrilled.**

- Lay-In-Lug™ Grounding Lug can be mounted on Cable Support Body - See page QA14.

### Material:

Bodies of Fittings are Malleable or Ductile Iron with Hot Dip Galvanized Finish.

### Optional Material/Finish:

Bodies of fittings are also available in Cast Aluminum. Add suffix "A" to Catalog Number. Example: **S-1500A-1**. Contact your local representative for price and availability. For non-metallic bodies, see page QA4.

### Third Party Certification:



UL Listed: E-11853



CSA Certified: 11584

### Applicable Third Party Standards:

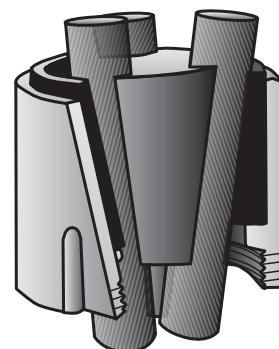
UL Standard: 514B  
CSA Standard C22.2 No. 18  
NEC 300-19

<sup>†</sup> For Threadless Rigid Conduit, Threadless IMC, or EMT, the body can be attached to the male threads of a set-screw or compression connector. See Catalog Sections EA, FA, and FB. For PVC Conduit, use a PVC terminal adapter. If mounting on a non-metallic/non-grounded conduit, a Lay-In-Lug™ grounding lug should be mounted on cable support body - see page QA14.

### TO ORDER SPECIFY:

- 1 Catalog Number
- 2 Type and number of conductors in conduit
- 3 Outside diameters of each conductor

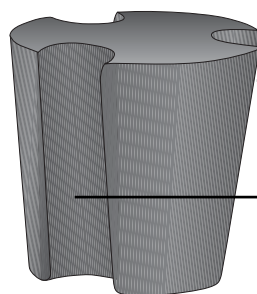
\*Cable support plugs will not be supplied undrilled.



Type S

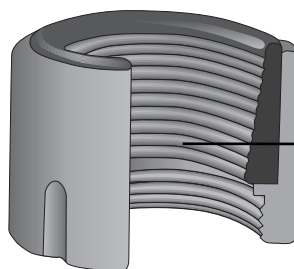
Conduit Size	Catalog Number Complete Fitting		Catalog Number Body Only	Catalog Number Plug Only*		Dimensions in Inches Outside Diameter Overall Height	
	2-4 Same Size Wires	Any Number of Different Size Wires or 5 or More Same Size Wires		2-4 Same Size Wires	Any Number of Different Size Wires or 5 or More Same Size Wires		
1½"	S-1500-1	S-1500-2	S-1500-BO	SPLG-1500-1	SPLG-1500-2	2⅝"	2⅝"
2"	S-2000-1	S-2000-2	S-2000-BO	SPLG-2000-1	SPLG-2000-2	3⅝"	2⅝"
2½"	S-2500-1	S-2500-2	S-2500-BO	SPLG-2500-1	SPLG-2500-2	3¾"	3"
3"	S-3000-1	S-3000-2	S-3000-BO	SPLG-3000-1	SPLG-3000-2	4½"	3⅝"
3½"	S-3500-1	S-3500-2	S-3500-BO	SPLG-3500-1	SPLG-3500-2	5⅝"	3½"
4"	S-4000-1	S-4000-2	S-4000-BO	SPLG-4000-1	SPLG-4000-2	5⅝"	3⅝"
5"	S-5000-1	S-5000-2	S-5000-BO	SPLG-5000-1	SPLG-5000-2	6⅝"	4½"
6"	S-6000-1	S-6000-2	S-6000-BO	SPLG-6000-1	SPLG-6000-2	8⅝"	5½"

\*Cable support plugs will not be supplied undrilled.



Impregnated Hardwood  
pOZi-grip® Wedging Plug

Shape and special gripping surface of grooves in plug give maximum support to cable.



Malleable or Ductile Iron  
Body

Tapered inside surface of insulating bushing is knurled to grip cable.